

GUIDE TO THE GOODS

THE WORLD OF RED AT YOUR FINGERTIPS



MOUNTAIN RESORT
ROSSLAND, B.C. | www.redresort.com



RED MOUNTAIN RESORT



RECREATING IS SERIOUS BUSINESS AROUND HERE

Fiercely independent RED Mountain Resort, located in Rossland, BC, is a place of powerful contrasts. We're the oldest resort in Western Canada yet we're also home to one of the most significant single terrain expansions of the 21st century. We're proudly Canadian yet located only minutes over the USA border in the snowy Kootenay mountains.

Guests love our unpretentious vibes as much as our massive terrain—3,850 acres!—that puts us in the Top 10, size-wise, in North America. We're bad at math but proud of our numbers: nearly 3,000 ft of vertical drop, 300 inches of snowfall, pay-per-run in-bounds cat skiing, and 5—count 'em 5—skiable peaks. You can stay a snowball's throw from

the lift at a modern hostel, kick back at a slopeside condo or 4-star boutique hotel, spend the night on the backside of the mountain in your own cabin away from it all, or even take advantage of the incomparable real estate and make RED your home.

We have famous tree runs, pristine powder, glorious groomers, Ikon Pass access, a brand-new bike park, and claim to Canada's #1 Ski Town two years in a row. We were once under the radar, now we're the Next Big Thing.

» WWW.REDRESORT.COM





ROBERTS
VERT 810M/2658FT

GRANITE
VERT 890M/2919FT

GREY
VERT 862M/2831FT

KIRKUP
VERT 808M/2650FT

RED
VERT 405M/1328FT



3,850 TOTAL
SKIABLE ACRES

TOP 10
TOTAL SKIABLE ACRES
IN NORTH AMERICA

RANKED #1
MOST ACRES
PER SKIER IN N. AMERICA

ROSSLAND, BC



PUNCHING ABOVE OUR WEIGHT SINCE 1896

Gold got ‘em here. And the Kootenays kept ‘em here. When gold-crazy miners struck pay dirt here in the late 1800s, they couldn’t have possibly known what would be “left in the pan” by today. But their grit, courage, and resourcefulness set the tone for the town to come. And, thanks to them, Rossland remains real in an era of artifice.

It might not be as rowdy as the Rossland of 1896 with its 42 saloons and 21 brothels, but this place has a pulse. You can feel it on the street, in the shops, or in the grocery store. It hits you as soon as you step out of your car. The hard-as-hobnails miners with pick axes over their shoulders have simply been replaced by hardcore fun-seekers with fat skis or mountain bikes over their shoulders. It’s true many of them still have massive beards but, rest assured, the vibe is more “bro” than “brothel” heading into the winter.

Modern-day Rossland is that rare beast: A place of small town charm and big, big ideas. A real municipality at the base of a world-class ski resort. A four season paradise where there are more recreational opportunities than there are hours in the day. A historic downtown core with all the modern conveniences, from gourmet espresso to book stores. And all of it is held together by the famously friendly locals and their commitment to making sure that Canadian Hospitality still means something, whether you’re traveling as a family or on a solo powder pilgrimage.



DAVE HEATH

VOTED #1
SKI TOWN
IN CANADA
USA TODAY 10BEST
2020 & 2021





THE CRESCENT



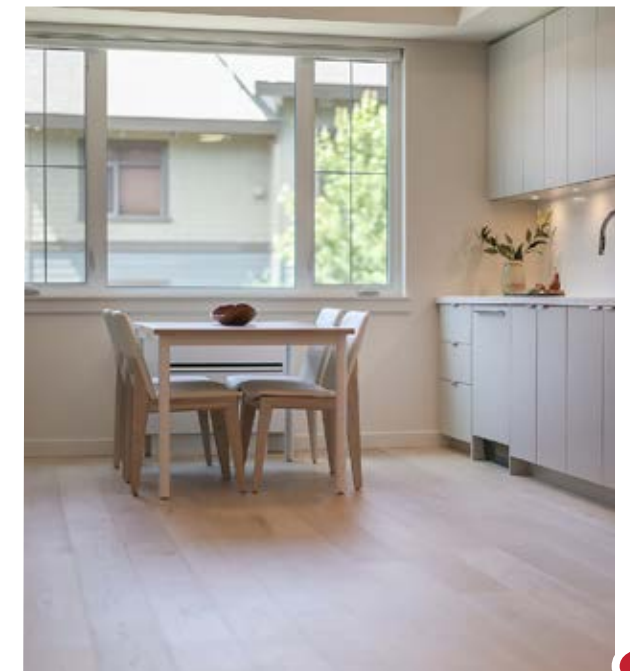
MODERN ALPINE FLATS

The Crescent is RED Mountain Resort's newest development situated right at the base of RED with 102 homes in total. Ranging from highly efficient 426-sq ft studio suites to top floor lofts and unique, one bedroom corner suites, this new property adds valuable and largely unavailable housing to the resort.

The studio suites sleep 4 and have extensive built-ins and ski lockers located directly outside the suite entry. Our loft suites, which sleep up to six, have soaring ceiling heights and an upper floor sleep area.

The Crescent features connected spaces that offer everything you're looking for right at home. Chill spaces to socialize with your neighbours, outdoor BBQ stations for grilling out with friends, a shared work area for remote moguls, a fitness centre to stretch out and activate muscles, in-suite laundry to take a load off, and even a local market for snacking out or stocking up.

» [REDRESORT.COM/THE-CRESCENT](https://redresort.com/the-crescent)



SLALOM CREEK CONDOS



ON THE LIFTS IN RECORD TIME

Prepare to have your ski town expectations exceeded. With a 4.5-Star average user rating on TripAdvisor, Slalom Creek is your go-to for a perfect slopeside experience at RED Mountain.

Amenities at Slalom Creek include modern kitchens, covered deck hot tubs with available mountain views, large master bedrooms, and steam showers. It's no wonder so many families stay at Slalom Creek once and then book year after year.

A week or weekend at Slalom Creek makes relaxation pretty much mandatory. Freshen up in your steam shower after skiing then walk to independent restaurants or to world-famous Rafter's for our "No Shower Happy Hour". Have a snowball fight. Walk

around in the snow. Enjoy fresh air at its finest, and mountain vistas you might try to smuggle home in your luggage.

Other perks include: tasteful furnishings, WiFi, flatscreen TVs, ski rooms, games room, elevator, underground parking, and more. If you need it, it's here. If you don't, it ain't.

Say goodbye to "Lodge-Podge" and stay in style this winter at Slalom Creek: Champagne accomodation on a beer budget.

» [REDRESORT.COM/SLALOM-CREEK-CONDOS](https://redresort.com/slalom-creek-condos)





THE CONSTELLA CABINS



A BACKCOUNTRY EXPERIENCE FOR EVERYONE

Imagine making your next mountain getaway truly next level. The Constella: A Cabin Collective is our newest bucket-list experience here at RED, providing you a ski-in-only overnight resort stay as remote and unique as ever.

A collection of six cabins and central Clubhouse, the Constella is perfectly situated in the aptly named Paradise Basin on the backside of Granite Mountain. Our goal in building these cabins and clubhouse is to offer unreal, on-mountain, ski-in/ski-out access to RED—and they turned out even better than we'd hoped: High up the mountain, the clear Kootenay night sky will be up, above, and all around you. And with those sparkling stars actually feeling like they're within reach, you'll think you've finally found your own private paradise. (Shhh! You kind of

have...) Your night at The Constella includes a welcome après drink and dinner at the Clubhouse, with a full-service bar for additional purchases. With an outdoor firepit and additional outdoor deck seating, you have yourself a night to remember. When ready, retreat to your private eco-friendly cabin for a good night's sleep.

In the morning, strap on your board or skis and hit first tracks at the Paradise Chair when the lifts start spinning! Talk about an unforgettable experience.

» WWW.REDRESORT.COM/CONSTELLA



ASHLEY VOYKIN



ASHLEY VOYKIN

NOWHERE SPECIAL



MODERN TRAVELERS REJOICE

Nowhere Special is the quintessential modern hostel suitable for travelers of all ages who value community, connection, and careful curation above all. The operating mantra since the napkin-stage has been the same one that's kept RED cool for over 100 years, i.e. "Everything you need & nothing you don't".

Located a mere two-minute walk from the chairlift, Nowhere Special dishes out a number of floor plans catering to different needs for privacy and price; from family rooms, privates, and even a private kitchen suite, we got it all! A standard room here at Nowhere Special sleeps four and shares an ensuite bathroom for every eight guests.

We know there's a lot of you exploring Canada's West on your own, or in a small group, and our goal is to provide that perfect social mix to help create memories that last for a lifetime—on and off the mountain! The beautiful town

of Rossland (just a 5-minute drive from the hostel) is incredibly friendly and this, more than anything, is what keeps people coming back. You are a stranger here but once...

Real-world needs like indoor bike and ski storage and an outdoor fire pit with two gas grills make Nowhere Special nothing like our name. A clean community kitchen with two ranges, a commercial fridge, and all the silverware and dishes you might need to build a serious après-ski spread for your "new best friends" round out the offering.

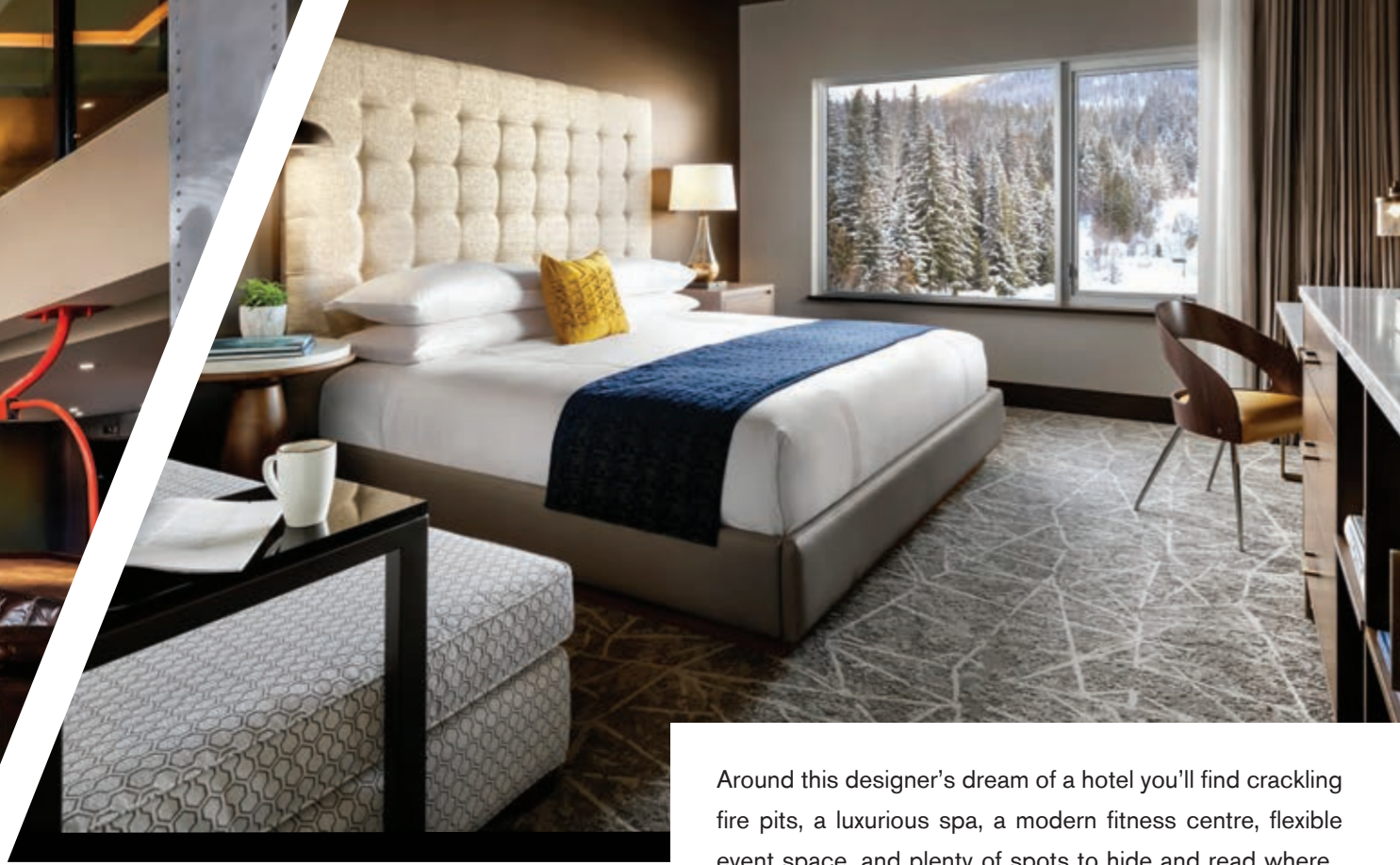
» NOWHERESPECIALHOSTEL.COM



ASHLEY VOYKIN



ASHLEY VOYKIN



MEET JOSIE.



SKI-IN/SKI-OUT BOUTIQUE HOTEL STEPS FROM THE CHAIR

Located slopeside at RED, just steps from the chairlift, The Josie an Autograph Collection Hotel puts pristine powder and the best gladed tree runs in North America right on your doorstep. Early risers, late sleepers, blanket hogs, and even furry friends can choose from 106 gorgeous guest rooms, studios, one and two-bedroom suites with expansive views of RED Mountain Resort and the Rossland Range. The only way to wake up closer to the slopes would be to sleep on a chairlift—brrrr!

Pull up a much warmer chair at The Velvet Restaurant & Lounge where you'll sip handcrafted cocktails and brews made by bartenders you'll refer to by nickname. Taste the territory with an elevated seasonal menu, surrounded by soaring mountain vistas. And do it all over again the very next day—after a lazy morning in your cushy guest suite, of course.

Around this designer's dream of a hotel you'll find crackling fire pits, a luxurious spa, a modern fitness centre, flexible event space, and plenty of spots to hide and read where your family can't find you. Need someone to set up cat skiing for your crew? Insider tips on favorite runs? The Josie's dedicated concierge team will hook you up with everything you need, including a ski valet laying your skis on the snow each morning for the ultimate in ski-in/ski-out luxury.

While winter serves up our famous skiing and snowboarding, the summer months in Rossland offer world-class mountain biking, hiking, golfing, fishing and so much more. Base yourself at The Josie and adventure is always in-season.

»[THEJOSIE.COM](https://www.thejosie.com)

THE *Josie*

AUTOGRAPH COLLECTION[®]
HOTELS



TRAIL MAP



Vertical Drop	890m/2919ft
Skiable Acres	3,850ac
Runs	119
Lifts	8
Beginner ●	17%
Intermediate ■	34%
Advanced ◆	23%
Expert ◆◆	26%

MT. ROBERTS
1995m/6545ft

GRANITE MOUNTAIN
2075m/6807ft

GREY MOUNTAIN
2048m/6719ft

MOUNT KIRKUP
2064m/6772ft

RED MOUNTAIN
1591m/5219ft

ROSSLAND

17

18

MT. ROBERTS
1995m/6545ft

GRANITE MOUNTAIN
2075m/6807ft

GREY MOUNTAIN
2048m/6719ft

MOUNT KIRKUP
2064m/6772ft

RED MOUNTAIN
1591m/5219ft

ROSSLAND

17

18

MT. ROBERTS
1995m/6545ft

GRANITE MOUNTAIN
2075m/6807ft

GREY MOUNTAIN
2048m/6719ft

MOUNT KIRKUP
2064m/6772ft

RED MOUNTAIN
1591m/5219ft

ROSSLAND

17

18

OVERVIEW



ALL ACCESS

If you're new to RED, all of these potential runs and lines can be a little overwhelming. Don't fret! No matter which adventure you choose, those lines will eventually funnel you back to our long and cruisy cat-tracks, guiding you back to a lift so you can send it all over again (and again).

Scope the **Paradise Face (inset A)**, blast into **Granite Bowl (inset B)**, rip the frontside off Motherlode, or hop over to Grey for laps off both the Grey and Topping Creek Chairs. And when you're ready to level up, catch the snowcat at the top of Grey and get whisked off to Mt. Kirkup for our famous pay-per-run cat skiing.





FOOD & DRINK



PRE & POST-APRÈS ARE NOT THE SAME AS “DINNER”

Whether you were baptized with a burger in-hand or lean more toward grilled baby leeks glazed with white truffle oil, Rossland’s restaurants are sure to satisfy.

Gourmet pizza at Misty Mountain? Check. Sit-down eye-talian at Gabriella’s? Sì. French-inspired and chef created at The Velvet? Bien sûr! Life changing nachos and caesars at Rafters? Burp. Tempting tempura at Aka Dake Sushi? Hail Decadent desserts at Idgie’s? Hey, that’s mine! Food, fun and fist bumps at The Flying Steamshovel, a Gold Rush era pub? Oh, hells yes! Crafty craft beers at Rossland Beer Company? Cheers—and please put your toque back on! Cook your own back at the condo with

ingredients from Ferraro Foods, our gourmet grocery? YOU made this?! Even our Thai food at Mook Thai is top notch. We can keep going, just thai and stop us.

We think it’s safe to say you get it... But here’s the deal: Rossland’s amazing four-season lifestyle offerings have all but guaranteed that entrepreneurial gourmets, chefs, brewers and coffee heads move here and set up shop. And when that happens, that’s clearly a win for everyone. Let’s just say that it was all part of our master plan.



RYAN FLETT



DAVE HEATH

BOUTIQUE



FILL YOUR BOOTS OR JUST GET THEM FITTED

For some folks (who shall go nameless), a ski holiday is simply a great excuse to go shopping. At least now we understand why so many large pockets on that giant ski bag were left strategically empty...

Rossland's independent spirit is perfectly reflected in the shop windows lining our historic streets: no Big Box stores here. You'll score items that you've never seen before, from infant onesies to top-of-the-line Gore-Tex onesies for grownups.

Shop curated apparel at Out of the Cellar, any and all things cooking at Bear Country Kitchen, clothing and accessories at Curiosity Clothing and Gifts, and high-quality giftware from local artists at Kootenay Gateway. Or, have a bed 'n' bath bonanza at Feather Your Nest and then get your second wind at one of Rossland's awesome coffee shops like the Alpine Grind or Seven Summits Coffee Company (We've done studies and a large latte will enable you to

shop for exactly 2.5 more hours.)

Your dad's 30 year-old gloves with duct tape not doing the trick your first day on the mountain? Go buck wild with the best pick of endless soft goods at the Piste Off Supply Co. conveniently located at the base of RED. And if it's your sports gear that needs upgrading or tweaking, know that Rossland's wizards, such as Rossland Outdoor, Butch Boutry, and Revolution, can sort you out in ways you never thought possible. They live, eat and breathe mountain sports so they know what works best, regardless of budget. Get your boots fitted or yourself kitted right out, from goggles to gewgaws.



© RYAN FLETT



© RYAN FLETT



© RYAN FLETT

CABIN CRED

WARMING HUTS LIKE NOWHERE ELSE

The Rossland Range's cabin network is truly the stuff of legend. Each one has its own name and flavour and all 13 of them are available for daytime use. Explore the network of trails punctuated by these funky cabins and bring some snacks to warm up on the wood fires. There are many itineraries to choose from, with different lengths and ability levels to suit all visitors. The usual experience can take anywhere from 30 minutes to 2 hours—or more if you take a break. Access is by snowshoe, cross-country/touring ski, or fat bike and always leads to a one-of-a-kind adventure. (Plus: selfies with Old West street cred.)

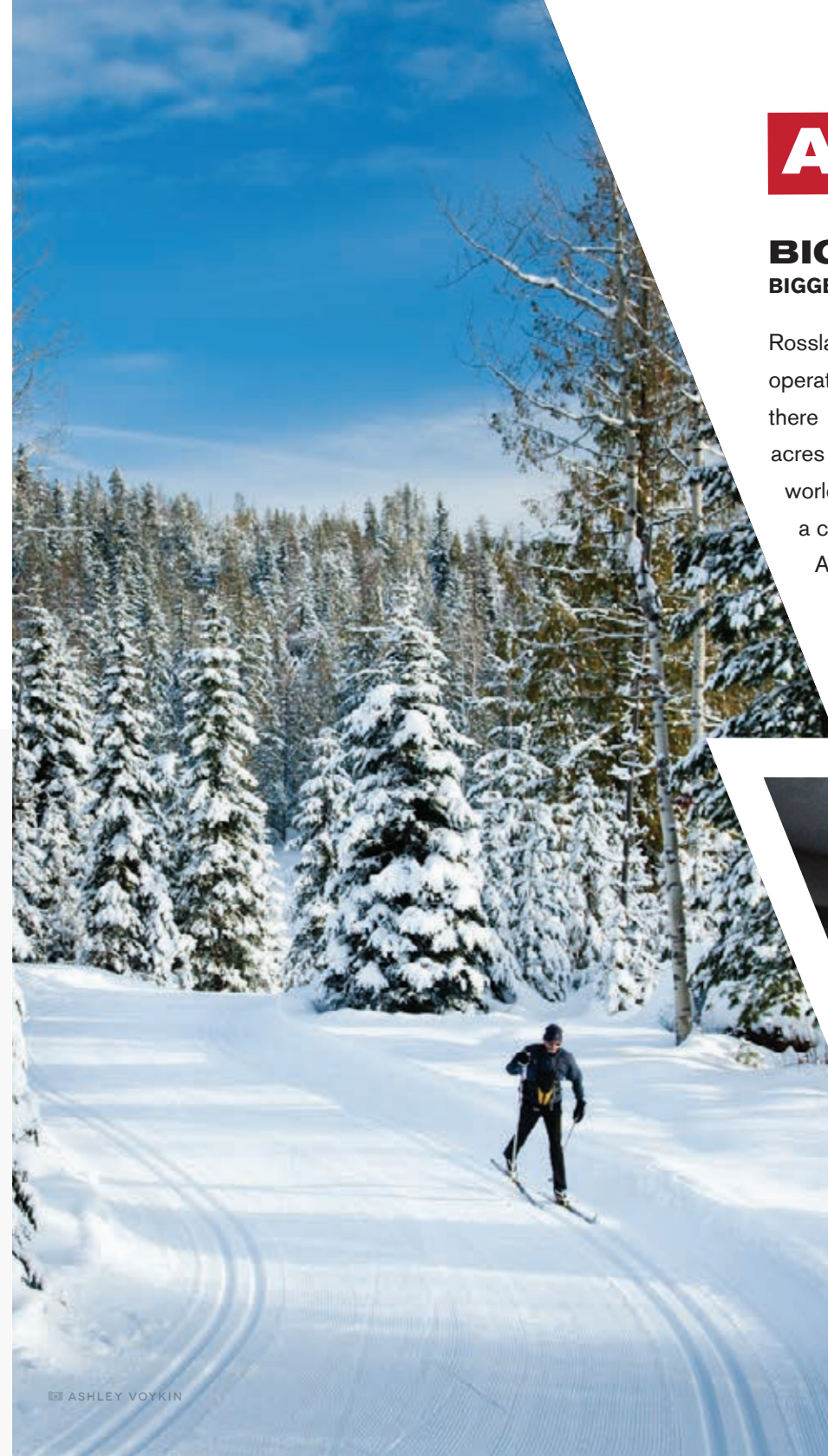
»[ROSSLANDRANGE.ORG](https://rosslandrange.org)

BLACK JACK

THE ODDS ARE 1 IN 6...

Black Jack Cross Country Ski Club boasts 40 kms of professionally-groomed trails for classic and skate skiing, a Biathlon range, a 2 km doggy loop, 3 cozy cabins, and 2.5 kms of lit trails. It's a blue chip experience on a white chip budget, all only 4 minutes north of town.

»[SKIBLACKJACK.CA](https://skiblackjack.ca)



ASHLEY VOYKIN

ADVENTURES FOR ALL



BIG RED CATS

BIGGER THAN SOME SMALL COUNTRIES

Rossland's Big Red Cats (BRC) is the world's largest cat skiing operation headquartered right next door to RED. Not only are there 8 peaks at BRC's disposal, there are almost 20,000 acres of the best tree skiing, glades and pillow lines in the world. With BRC you can explore the vast backcountry with a cat-full of stoked riders sharing your ability: Intermediate, Advanced, Expert or, occasionally, Über-expert. Yeah, that's right: Über-expert.

»[BIGREDCATSKIING.COM](https://bigredcatskiing.com)



RYAN FLETT

PAY-PER-RIDE CAT SKIING

RED MOUNTAIN'S IN-BOUNDS MT. KIRKUP CAT

Looking for an introduction to cat skiing, or maybe just a few extra-epic powder laps? Grey Mountain is the pick-up location for RED's pay-per-run cat skiing operation that shuttles powder-frothing skiers and snowboarders up to the top of adjacent Mt Kirkup to shred 1,600ft. of vertical and nearly 200 acres that isn't chairlift accessible. The best part? The end of your run takes you right back to the Grey chairlift. Powder to the people.

»[REDRESORT.COM/KIRKUPCAT](https://redresort.com/kirkupcat)



ASHLEY VOYKIN

NEW RED MTN BIKE PARK



FRESHLY BUILT, ALREADY ADDICTIVE

RED Mountain Resort is full throttle into its next chapter with the brand-new RED Mountain Bike Park—already blowing minds and derailing summer chore lists across the region and beyond. (Sorry lawns, you're on your own.) This is no side project. It's a multimillion-dollar, multi-year rocket boost turning RED into a four-season playground where gravity reigns supreme.

With Gravity Logic in our corner—the mad scientists and leading experts of bike park design—the stoke has been off the charts. With trails smoother than your buddy's pickup lines, and jump lines that can send riders airborne like

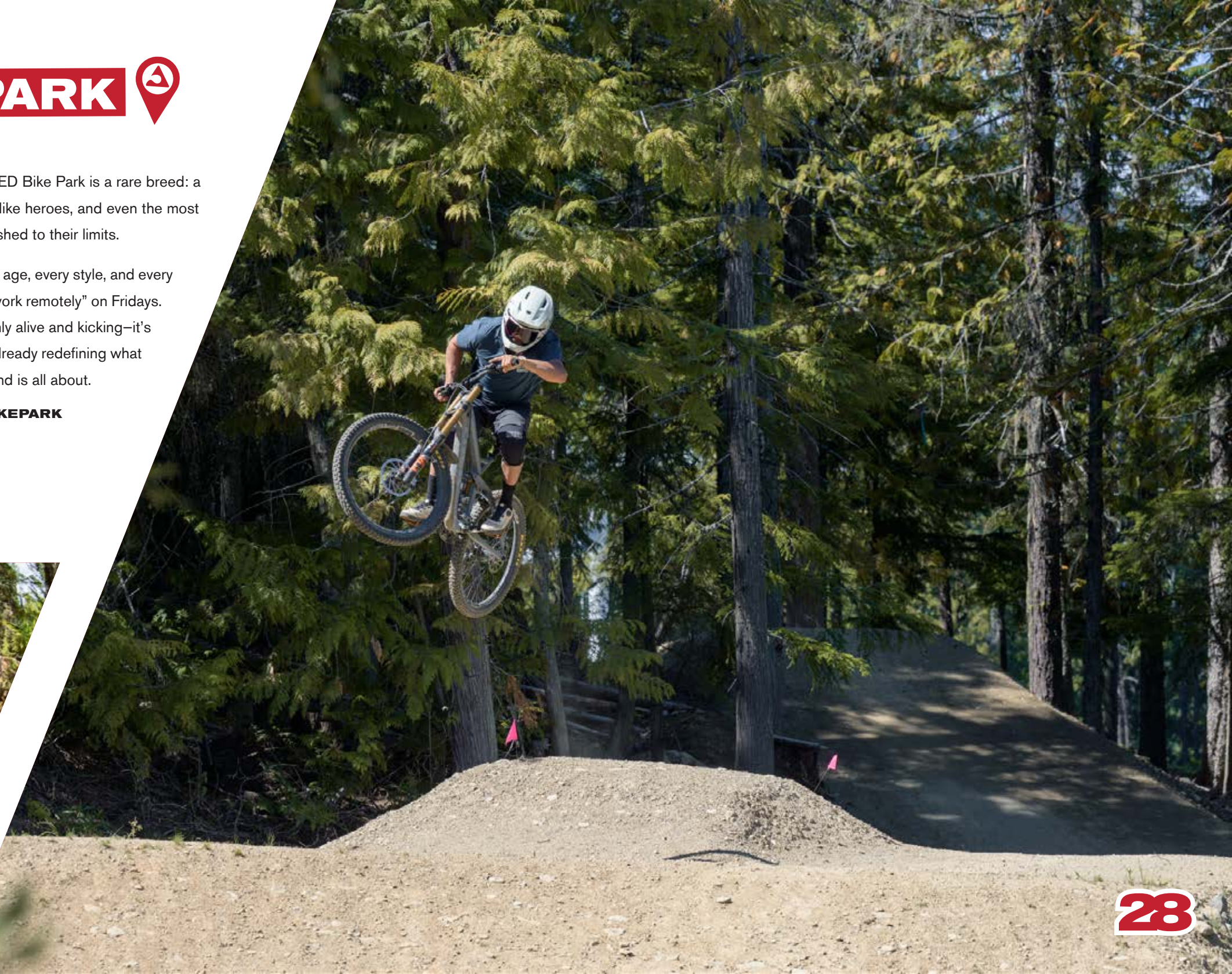
human fireworks, the new RED Bike Park is a rare breed: a place where beginners ride like heroes, and even the most seasoned shredders get pushed to their limits.

It's a bike park built for every age, every style, and every excuse you can muster to “work remotely” on Fridays. The RED Bike Park is not only alive and kicking—it's thriving, it's rowdy, and it's already redefining what summer at RED and Rossland is all about.

» [REDRESORT.COM/BIKEPARK](https://redresort.com/bikepark)



ASHLEY VOYKIN



ACCOMMODATIONS



WORK HARD. PLAY HARD. SLEEP HARD.

NO MATTER HOW DEEP YOUR CREW—OR HOW SKINNY YOUR WALLET—RED MOUNTAIN RESORT LODGING HAS THE PERFECT PLACE TO HANG YOUR TOQUE. MAYBE YOU’LL HAVE TO JUST TRY ALL OF THEM. WE WON’T BLAME YOU.

SLALOM CREEK CONDOS



Slalom Creek remains a go-to option for many travelers for its combination of privacy, luxury, and out-the-door condo ease right at the base of RED. Cook a gourmet meal for your family & friends in the modern kitchen and then sneak out to the hot tub on the deck before you get stuck on dish duty, too.

Amenities: Private hot tub, WiFi, fitness room, indoor parking, in-house laundry, gas fireplace, ski storage, game room, & meeting rooms

THE CRESCENT



The Crescent is RED Mountain Resort’s newest development situated right at the base of RED with 102 homes in total. Ranging from highly efficient 426-sq ft studio suites to top floor lofts and unique, one bedroom corner suites, this new property adds valuable and largely unavailable housing to the resort.

Amenities: studio suites, high ceilings, social spaces, outdoor BBQ stations, shared workspace, fitness centre, in-suite laundry, local market.

NOWHERE SPECIAL HOSTEL



Just a 2-minute walk to the chairlift, Nowhere Special Modern Hostel is perfect for social solo travelers, thrifty powder hounds, small families, and anyone who values community and connection.

Amenities: WiFi, indoor ski and bike storage, private rooms, deck with firepit and BBQs, tech-friendly lounge and modern kitchen, conference and meeting rooms, handicap rooms

THE CONSTELLA CABINS



A collection of six cabins and a central clubhouse, the Constella: A Cabin Collective, is perfectly situated in the aptly named Paradise Basin on the backside of Granite Mountain. Walk out your door, strap on your board or skis, and get first tracks to start your day lapping the Paradise Chair. Talk about unforgettable.

Amenities: ski-in/ski-out, access to central clubhouse for the afternoon/evening, full F&B bar, dinner and welcome drink included, optional breakfast, direct access to Paradise Chairlift

THE JOSIE HOTEL



Located slopeside at RED, The Josie offers ski-in/ski-out boutique rooms and suites, crackling firepits, a spa, ski valet and concierge services. Pull up a seat at The Velvet Restaurant & Lounge where plates and glasses are filled with vibrant craft cooking and cocktails.

Amenities: Spa, premier fitness facility, WiFi, restaurant and lounge, meeting and event space, ski valet and concierge, valet parking, ski-in/ski-out

EVEN MORE



EXPLORE MORE PROPERTIES ON-MOUNTAIN AND IN TOWN

RED BASE AREA

RED MOUNTAIN VILLAGE



THE RED SHUTTER INN



MOUNTAIN TOWN PROPERTIES

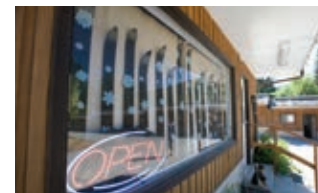


ROSSLAND AREA

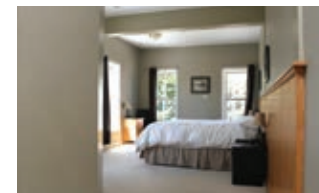
ROSSLAND RED MT. INN & SUITES



LONE STAR MOTEL



THE FLYING STEAMSHOVEL



RED BARN LODGE



CANADIAN SKI QUEST GUEST HOUSE



ALADAR'S GUEST CABIN



ANGELA'S B&B & GUEST HOUSE



MOUNTAIN SHADOW HOSTEL



KC LOFT



PRESTIGE HOTEL



LAKEVOLD LODGE

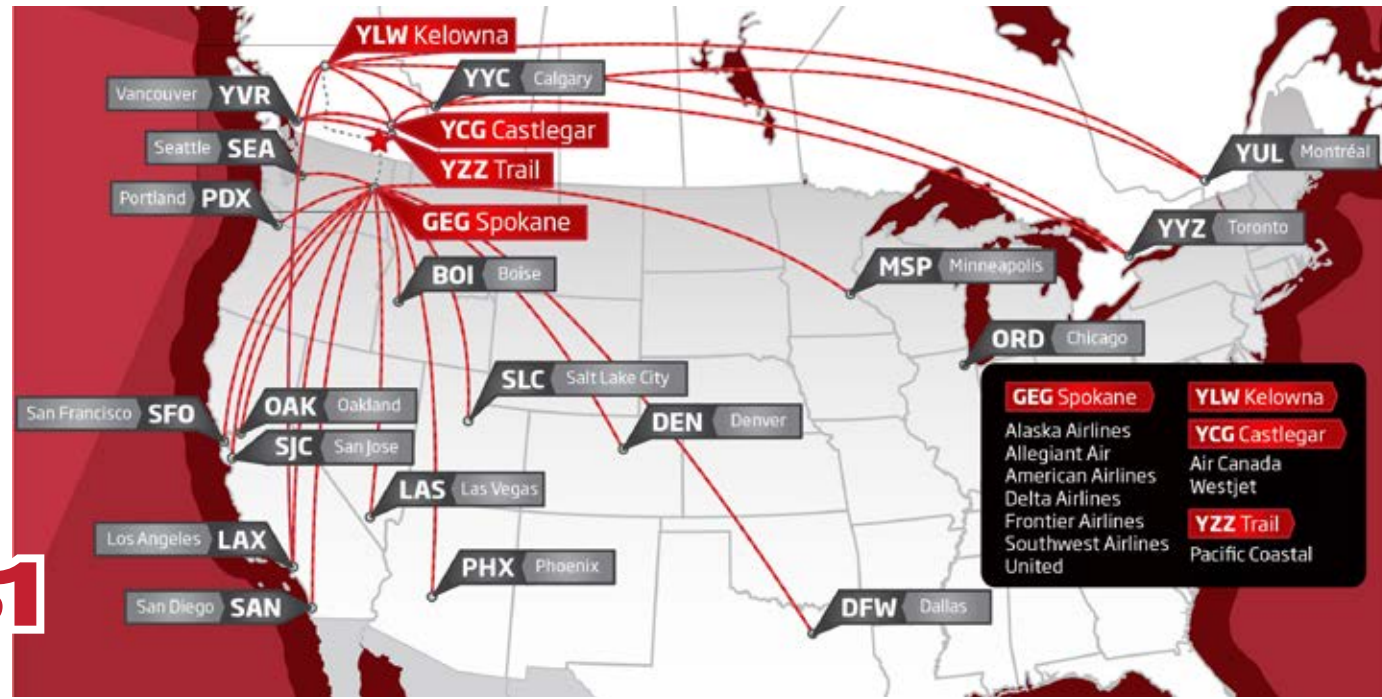
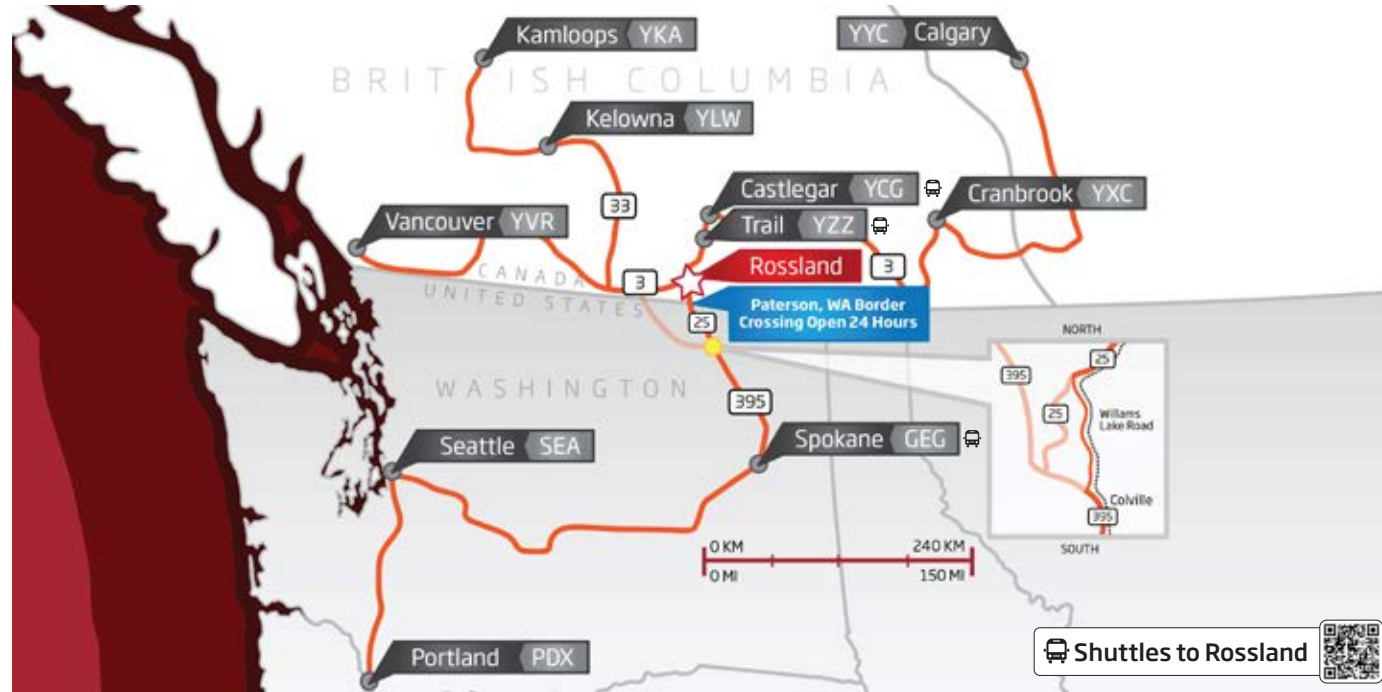


redresort.com/lodging | lodging@redresort.com | 1-877-969-7669 or 1-250-362-5553

» WWW.TOURISMROSSLAND.COM



HOW DO I GET TO RED?



LIVE THE LIFE AT RED



REAL LIFE. REAL ADVENTURE. REAL COMMUNITY.

RED Mountain Homes is a new, limited collection of neighbourhoods – condominiums, townhomes, and single-family home lots – created by adventurers for adventurers. Homes meant for those who share our love of mountain living—every trail, every turn, every sunrise and snowfall.

To learn more about one of the best mountain deals available in North America, scan the QR code below or visit:

» [REDMOUNTAINHOMES.CA](https://redmountainhomes.ca)





**“ADVENTURES OPEN
NEW DOORS IN THE
MOUNTAINS. THE BEST
PART IS NOT KNOWING
WHAT’S ON THE
OTHER SIDE.”**

-KENNETH MCALPINE



MOUNTAIN RESORT

ROSSLAND, B.C. | www.redresort.com



/REDRESORT
TIKTOK: @REDMOUNTAINRESORT

FRONT & BACK COVER PHOTO: ASHLEY VOYKIN