

THE WORLD OF RED



AT YOUR FINGERTIPS

x **GUIDE** x

TO
THE
GOODS







RED MOUNTAIN RESORT

RECREATING IS SERIOUS BUSINESS AROUND HERE

Located in Rossland, BC and 1st stop on Canada's famous Powder Highway, fiercely independent RED Mountain, is a place of powerful contrasts. We're the oldest resort in Western Canada yet we're also the home to one of the most significant terrain expansions in the last decade.

We're proudly Canadian yet located only minutes over the USA border in the snowy Kootenay mountains. Guests love our unpretentious vibes as much as our massive terrain—3,850 acres!—that puts us in the Top 10, size-wise, in North America (and #1 for Most Acres Per Skier!). You can stay a snowball's throw from the lift at a clean, modern hostel, kick back at a slope-side condo or in a boutique hotel, or spend the night on the backside of the mountain

in your own cabin away from it all. We're bad at math but proud of our numbers: nearly 3,000 ft of vertical drop; 300-inches of snowfall; \$10/run in-bounds cat-skiing; and 5, count 'em 5, skiable peaks. We have pristine powder, glorious groomers, Ikon Pass access, and some of the most famous tree skiing around.

But the biggest boon in the great compare/contrast of mountain resorts is surely our superpower: the town of Rossland, just down the road. This Gold Rush town's rugged charm and solid shopping and dining opportunities set RED apart from the pack, with The New York Times voting us their "#8 Best Place in the World to Visit." And USA Today 10Best awarding us as Canada's #1 Ski Town two years in a row (No tacky-tacky "villages" here!)

We were once under the radar, now we're the Next Big Thing.

» WWW.REDRESORT.COM

RED

VERT 405M/1,328FT



ROBERTS

VERT 810M/2,658FT



3

GRANITE

VERT 890M/2,919FT



GREY

VERT 862M/2,831FT



KIRKUP

VERT 808M/2,650FT



ROSSLAND, BC

PUNCHING ABOVE OUR WEIGHT SINCE 1896

Gold got 'em here. And the Kootenays kept 'em here. When gold-crazy miners struck pay dirt here in the late 1800s, they couldn't have possibly known what would be "left in the pan" by today. But their grit, courage, and resourcefulness set the tone for the town to come. And, thanks to them, Rossland remains real in an era of artifice.

It might not be as rowdy as the Rossland of 1896 with its 42 saloons and 21 brothels, but this place has a pulse. You can feel it on the street, in the shops, or in the grocery store. It hits you as soon as you step out of your car. The hard-as-hobnails miners with pick axes over their shoulders have simply been replaced by hardcore fun-seekers with fat skis or mountain bikes over their shoulders. It's true many of them still have massive beards but, rest assured, the vibe is more

"bro" than "brothel" heading into the winter.

Modern-day Rossland is that rare beast: A place of small town charm and big, big ideas. A real municipality at the base of a world-class ski resort. A four season paradise where there are more recreational opportunities than there are hours in the day. An historic downtown core with all mod cons, from gourmet espresso to book stores. And all of it is held together by the famously friendly locals and their commitment to making sure that Canadian Hospitality still means something, whether you're traveling as a family or on a solo powder pilgrimage.



DAVE HEATH

VOTED #1 SKI TOWN IN CANADA

USA TODAY 10BEST
2020 & 2021





THE CONSTELLA CABINS

A BACKCOUNTRY EXPERIENCE FOR EVERYONE

Imagine making your next mountain getaway truly next level. Debuted in December of 2020, The Constella: A Cabin Collective is our newest bucket list experience here at RED, providing you a ski-in-only overnight resort stay as remote and unique as ever.

A collection of six cabins and central Clubhouse, the Constella is perfectly situated in the aptly named Paradise Basin on the backside of Granite Mountain. Our goal in building these cabins and clubhouse is to offer unreal, on-mountain, ski-in/ski-out access to RED—and they turned out even better than we'd hoped: High up the mountain, the clear Kootenay night

sky will be up, above, and all around you. And with those sparkling stars actually feeling like they're within reach, you'll think you've finally found your own private paradise. (Shhh! You kind of have...) Your night at The Constella includes a welcome après drink and dinner at the Clubhouse, with a full-service bar for additional purchases. With an outdoor firepit and additional outdoor deck seating, and you have yourself a night to remember. When ready, retreat to your private eco-friendly cabin for a good night's sleep.

In the morning, strap on your board or skis and hit first tracks at the Paradise Chair the second the lifts start spinning! Talk about an unforgettable experience.

» WWW.REDRESORT.COM/CONSTELLA



ASHLEY VOYKIN



ASHLEY VOYKIN

NOWHERE SPECIAL HOSTEL

MODERN TRAVELERS REJOICE

Nowhere Special is the quintessential modern hostel, suitable for travelers of all ages who value community, connection, and careful curation above all. The operating mantra since the napkin-stage has been the same one that's kept RED cool for over 100 years, i.e. "Everything you need & nothing you don't".

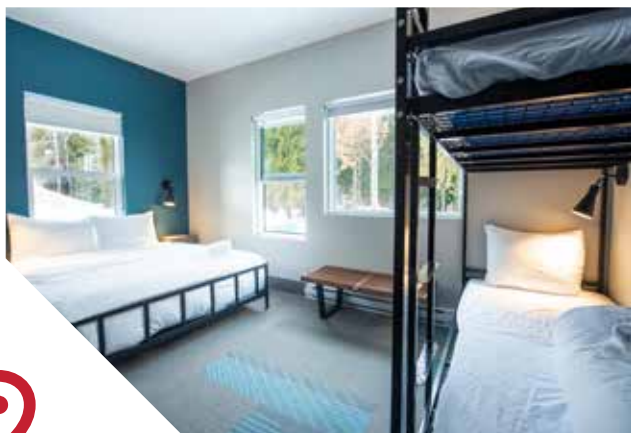
Located a mere two-minute walk from the chairlift, Nowhere Special dishes out a number of floor plans catering to different needs for privacy and price, from family rooms, privates, and even a private kitchen suite, we got it all! A standard room here at Nowhere Special sleeps four and shares an ensuite bathroom for each eight.

We know there's a lot of you exploring Canada's West on your own - or in a small group - and our goal is to provide that

perfect social mix to help create memories that last for a lifetime - on and off the mountain! The beautiful town of Rossland (and just a 5-minute drive from the hostel) is incredibly friendly and this, more than anything, is what keeps people coming back. You are a stranger here but once...

Real-world needs like indoor bike and ski storage and an outdoor fire pit with two gas grills make Nowhere Special nothing like our name. A clean community kitchen with two ranges, a commercial fridge, and all the silverware and dishes you might need to build a serious après-ski spread for your "new best friends" round out the offering.

» [NOWHERESPECIALHOSTEL.COM](https://nowherespecialhostel.com)



ASHLEY VOYKIN



ASHLEY VOYKIN







SLALOM CREEK CONDOS

ON THE LIFTS IN RECORD TIME

Prepare to have your ski town expectations exceeded. With a 4.5-Star average user rating on TripAdvisor, Slalom Creek is your go-to for a perfect sloside experience at RED Mountain.

Amenities at Slalom Creek include modern kitchens, covered deck hot tubs with available mountain views, large master bedrooms, and steam showers. It's no wonder so many families stay at Slalom Creek once and then book year after year.

A week or weekend at Slalom Creek makes relaxation pretty much mandatory. Freshen up in your steam

shower after skiing and walk to independent restaurants or to world-famous Rafters for our "No Shower Happy Hour". Have a snowball fight. Walk around in the snow and enjoy fresh air at its finest and mountain vistas you might try to smuggle home in your luggage.

Other perks include: tasteful furnishings, WiFi, flatscreen TVs, ski rooms, games room, elevator, underground parking, and more. Basically, if you need it, it's here. If you don't, it ain't.

Say goodbye to "Lodge-Podge" and stay in style this winter at Slalom Creek: Champagne accom on a beer budget.

» [REDRESERVATIONS.COM](https://www.redreservations.com)





MEET JOSIE.

SKI-IN/SKI-OUT BOUTIQUE HOTEL STEPS FROM THE CHAIR

Located slopeside at RED, just steps from the chairlift, The Josie an Autograph Collection Hotel puts pristine powder and the best gladed tree runs in North America right on your doorstep. Early risers, late sleepers, blanket hogs, and even furry friends can choose from 106 gorgeous guest rooms, studios, one and two-bedroom suites with expansive views of RED Mountain

Resort and the Rossland Range. The only way to wake up closer to the slopes would be to sleep on a chairlift—brrrr!

Pull up a much warmer chair at The Velvet Restaurant & Lounge where you'll sip handcrafted cocktails and brews made by bartenders you'll refer to by nickname. Taste the territory with an elevated seasonal menu, surrounded by soaring mountain vistas. And do it all over again the very next day—after a lazy morning in your cushy guest suite, of course.



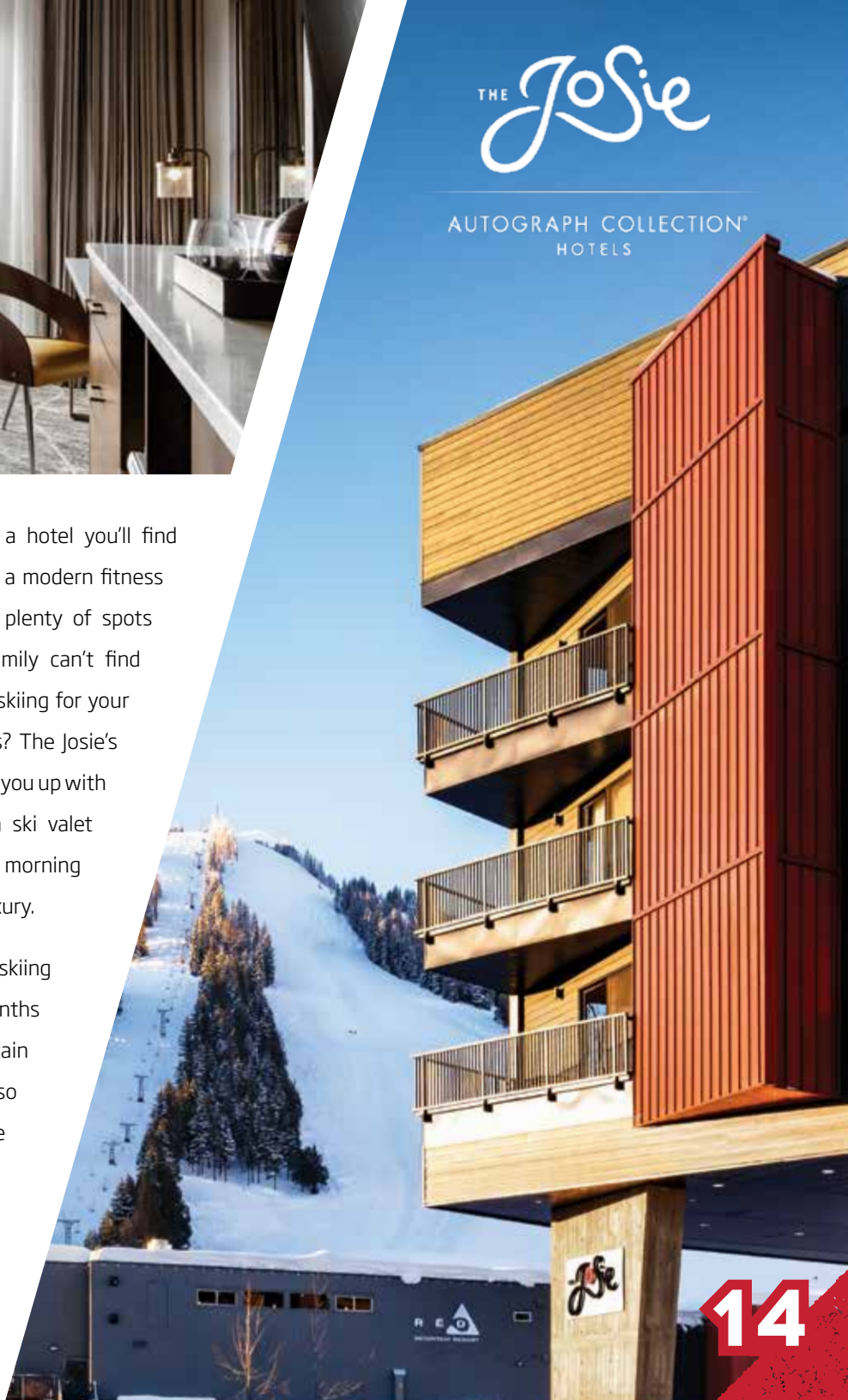
Around this designer's dream of a hotel you'll find crackling fire pits, a luxurious spa, a modern fitness centre, flexible event space, and plenty of spots to hide and read where your family can't find you. Need someone to set up cat skiing for your crew? Insider tips on favorite runs? The Josie's dedicated concierge team will hook you up with everything you need, including a ski valet laying your skis on the snow each morning for the ultimate in ski-in/ski-out luxury.

While winter serves up our famous skiing and snowboarding, the summer months in Rossland offer world-class mountain biking, hiking, golfing, fishing and so much more. Base yourself at The Josie and adventure is always in-season.

» THEJOSIE.COM

THE *Josie*

AUTOGRAPH COLLECTION®
HOTELS



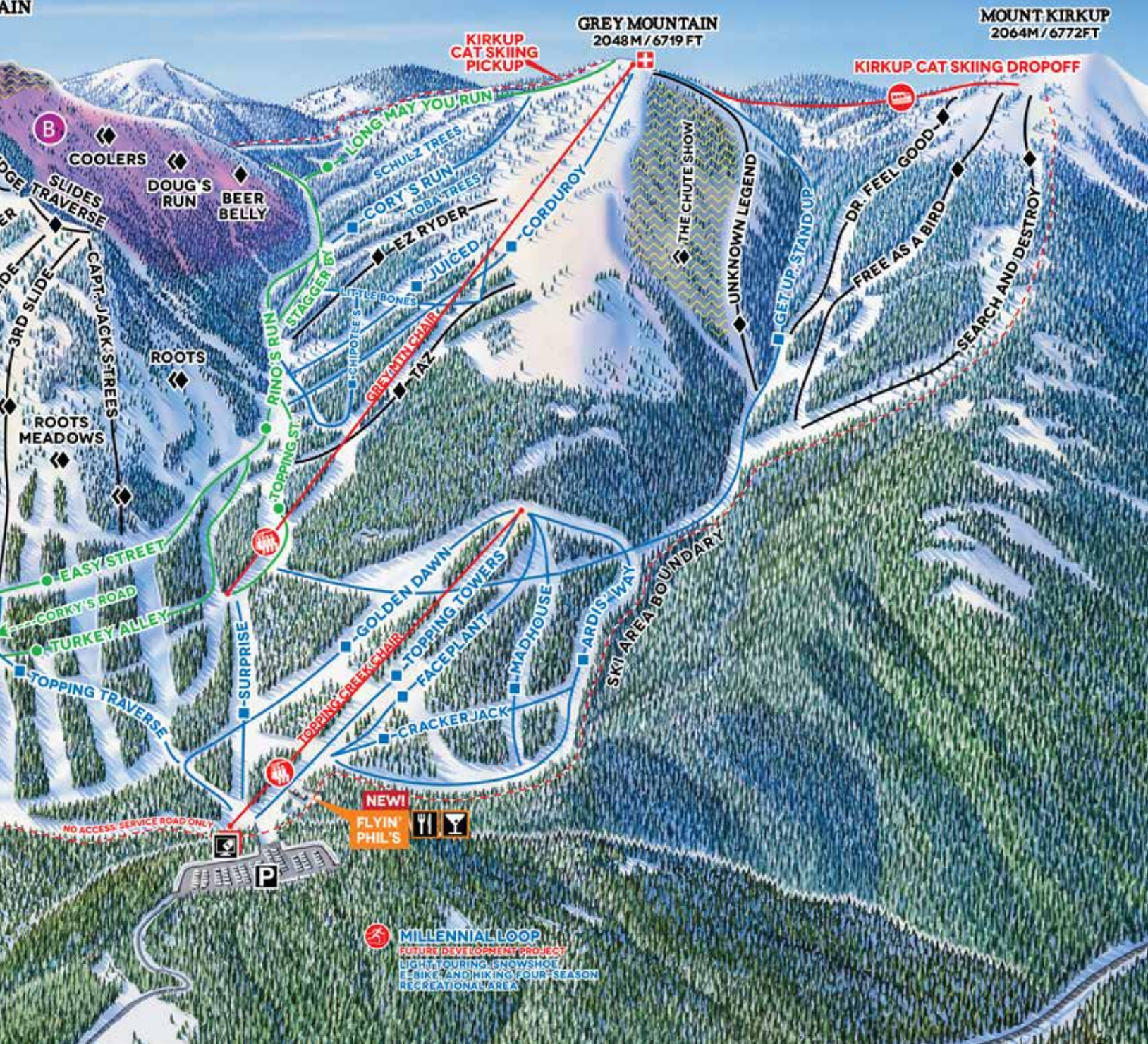


Expert ♦♦ 26%

MT. ROBERTS
1995 M / 6545 FT

Vertical Drop	890m/2919ft
Skiable Acres	3,850ac
Runs	119
Lifts	8
Beginner	17%
Intermediate	34%
Advanced	23%
Expert	26%

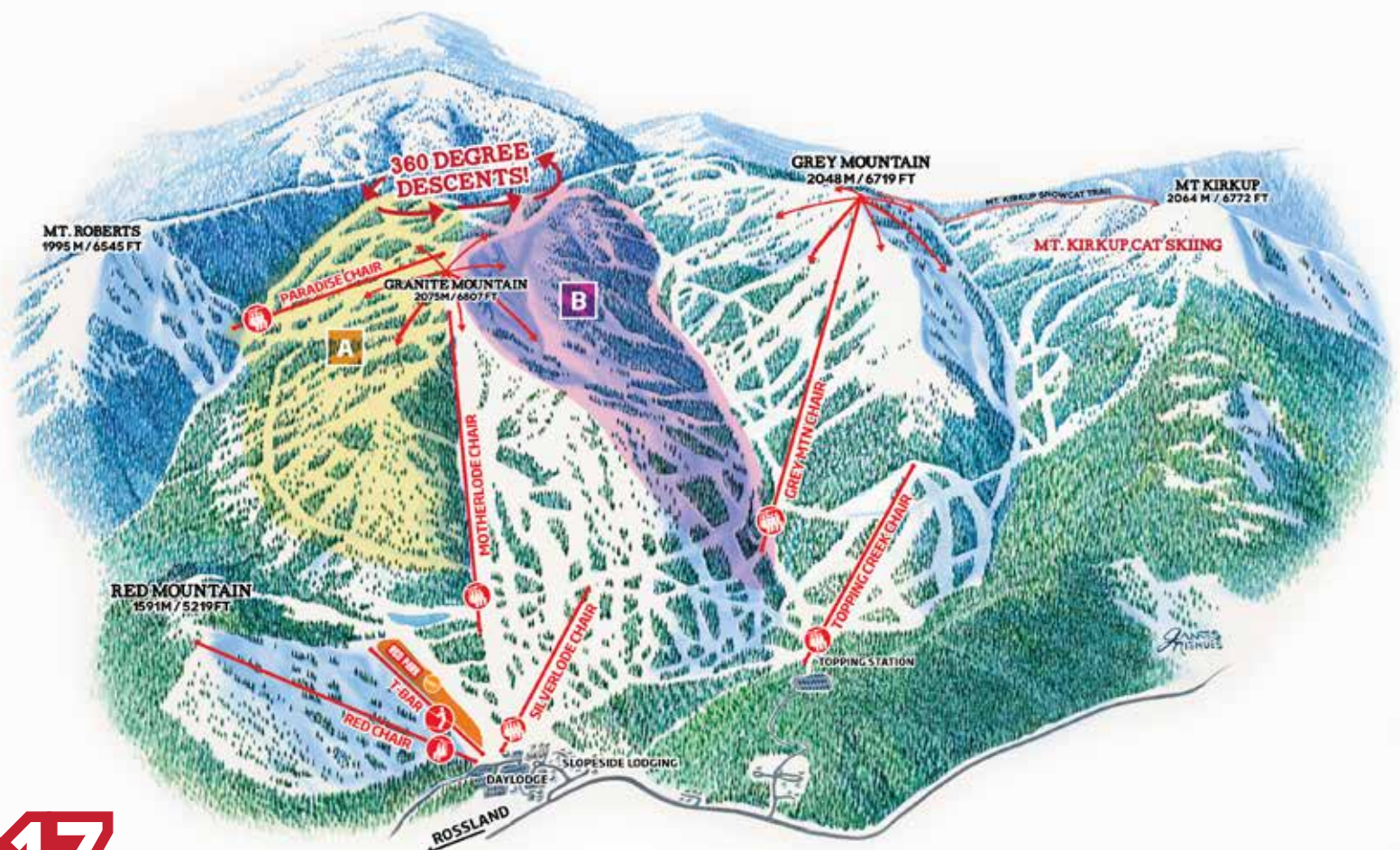
AIN



OVERVIEW

ALL ACCESS

If you're new to RED, all of these potential runs and lines can be a little overwhelming. Don't fret! No matter which adventure you choose -- hit up the **Paradise face (inset A)**; fly down into **Granite Bowl (inset B)**; take to the front near Motherlode; or head over to the Grey Mountain chair (whether it be runs on Grey, down to the newest addition of the Topping Creek Chair, or a snowcat pickup to take you on your way to Mt Kirkup!) -- you'll always find a cat track at the end guiding you back toward a lift to do it all over again.





Rafters



FOOD & DRINK

PRE & POST-APRÈS ARE NOT THE SAME AS “DINNER”

Whether you were baptized with a burger in-hand or lean more toward grilled baby leeks glazed with white truffle oil, Rossland's restaurants are sure to satisfy.

Gourmet pizza at Misty Mountain? Check. Sit-down eye-talian at Gabriella's? Sì. French-inspired and chef created at The Velvet? Bien sûr! Life changing nachos and caesars at Rafter's? Burp. Tempting tempura at Aka Dake Sushi? Hai! Decadent desserts at Idgie's? Hey, that's mine! Food, fun and fist bumps at The Flying Steamshovel, a Gold Rush era pub? Oh, hells yes! Crafty craft beers at Rossland Beer Company?

Cheers – and please put your toque back on! Cook your own back at the condo with ingredients from Ferraro Foods, our gourmet grocery? YOU made this?! Even our Thai food at Mook Thai is top notch. We can keep going, just thai and stop us.

We think it's safe to say you get it... But here's the deal: Rossland's amazing four-season lifestyle offerings have all but guaranteed that entrepreneurial gourmets, chefs, brewers and coffee heads move here and set up shop. And when that happens, that's clearly a win for everyone. Let's just say that it was all part of our master plan.



RYAN FLETT



DAVE HEATH



BOUTIQUE SHOPS

FILL YOUR BOOTS OR JUST GET THEM FITTED

For some folks (who shall go nameless), a ski holiday is simply a great excuse to go shopping. At least now we understand why so many large pockets on that giant ski bag were left strategically empty...

Rossland's independent spirit is perfectly reflected in the shop windows lining our historic streets: no Big Box stores here. You'll score items that you've never seen before, from infant onesies to top-of-the-line Gore-Tex onesies for grownups.

Shop curated apparel at Out of the Cellar, any and all things cooking at Bear Country Kitchen, clothing and accessories at Curiosity Clothing and Gifts, and high-quality giftware from local artists at Kootenay Gateway. Or, have a bed 'n' bath bonanza at Feather Your Nest and then get your second wind at one of Rossland's awesome coffee shops like the Alpine Grind or Seven Summits Coffee Company

(We've done studies and a large latte will enable you to shop for exactly 2.5 more hours.)

Your dad's 30 year-old gloves with duct tape not doing the trick your first day on the mountain? Go buck wild with the best pick of endless soft goods at the Piste Off Supply Co. conveniently located at the base of RED. And if it's your sports gear that needs upgrading or tweaking, know that Rossland's wizards, such as Powderhound, Butch Boutry, Revolution, and RossVegas Boardshop, can sort you out in ways you never thought possible. They live, eat and breathe mountain sports so they know what works best, regardless of budget. Get your boots fitted or yourself kitted right out, from goggles to gewgaws.



© RYAN FLETT



© RYAN FLETT



ADVENTURE AT YOUR FINGERTIPS

THE BEST SOURCE FOR THE
REGION'S ACTIVITIES

Rossland, BC is your gateway to adventure and GET LOST will help you find your way to our finest recreational opportunities. GET LOST is purpose-built for getting folks off their phones and out into an adventure they'll remember for life, whether that involves mountain biking the trails of Rossland or soaring the skies in a tandem paragliding adventure. All our favorite suppliers have been gathered together in one central location to get you on your way to an adventure of a lifetime.

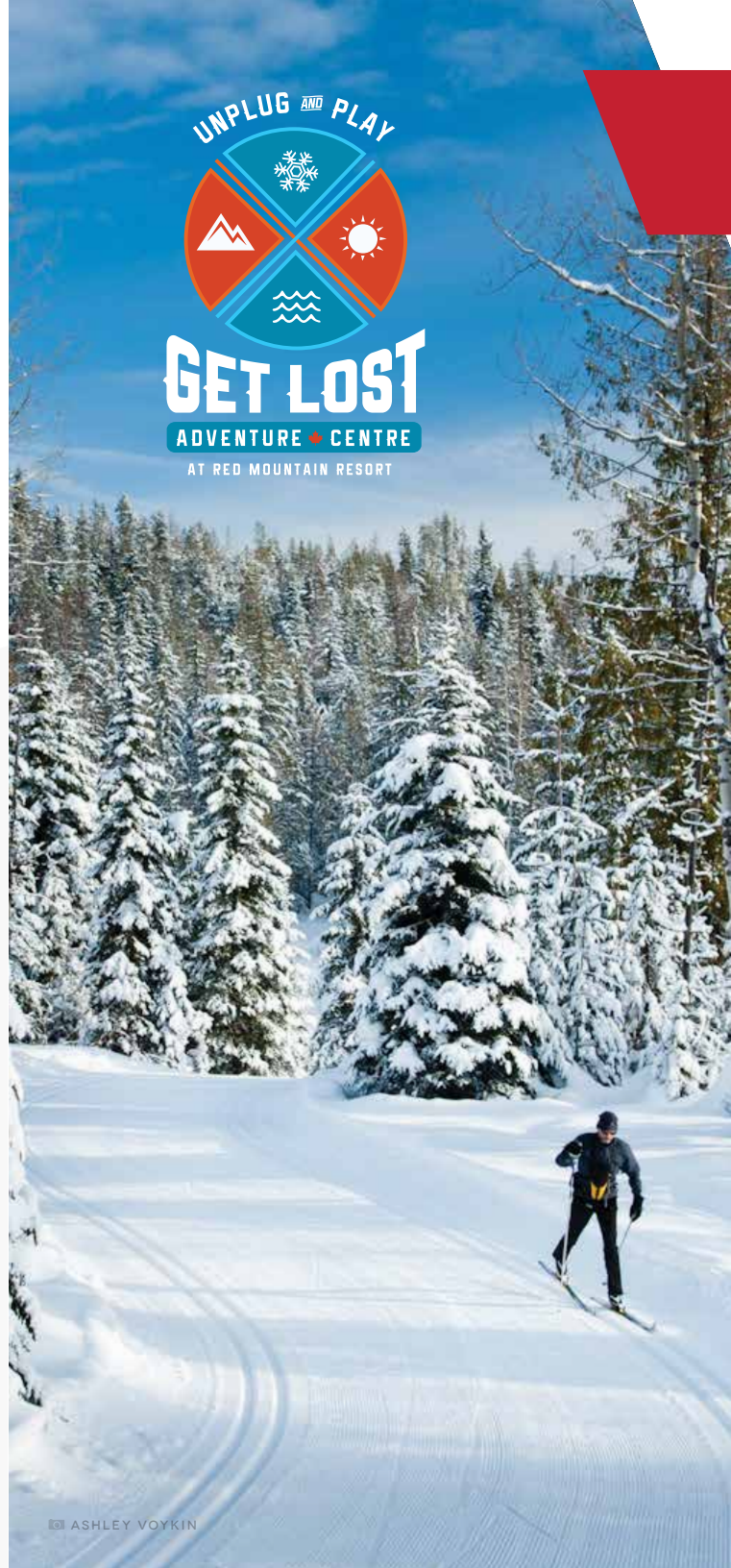
» [REDRESORT.COM/GETLOST](https://redresort.com/getlost)

BLACK JACK

THE ODDS ARE 1 IN 6...

Black Jack Cross Country Ski Club boasts 40 kms of professionally-groomed trails for classic and skate skiing, a Biathlon range, a 2 km doggy loop, 3 cozy cabins, and 2.5 kms of lit trails. It's a blue chip experience on a white chip budget, all only 4 minutes north of town.

» [SKIBLACKJACK.CA](https://skiblackjack.ca)



ADVENTURES FOR ALL

BIG RED CATS

BIGGER THAN SOME SMALL COUNTRIES

Rossland's Big Red Cats (BRC) is the world's largest cat skiing operation headquartered right next door to RED. Not only are there 8 peaks at BRC's disposal, there are almost 20,000 acres of the best tree skiing, glades and pillow lines in the world. With BRC you can explore the vast backcountry with a cat-full of stoked riders sharing your ability: Intermediate, Advanced, Expert or, occasionally, Über-expert. Yeah, that's right: Über-expert.

» BIGREDCATSKIING.COM

PAY-PER-RIDE CAT SKIING

RED MOUNTAIN'S IN-BOUNDS MT. KIRKUP CAT

Looking for an introduction to cat skiing, or maybe just a few extra-epic powder laps? Grey Mountain is the pick-up location for RED's \$10/run cat skiing operation that shuttles powder-frothing skiers and snowboarders up to the top of adjacent Mt Kirkup to shred 1,600 ft. of vertical and nearly 200 acres that isn't chairlift accessible. The best part? The end of your run takes you right back to the Grey chairlift. Powder to the people.

» REDRESORT.COM/MT-KIRKUP-CAT-SKI



© RYAN FLETT



© RORY COURT



ACCOMMODATIONS

WORK HARD. PLAY HARD. SLEEP HARD.

NO MATTER HOW DEEP YOUR CREW—OR HOW SKINNY YOUR WALLET—RED MOUNTAIN RESORT LODGING HAS THE PERFECT PLACE TO HANG YOUR TOQUE. MAYBE YOU’LL HAVE TO JUST TRY ALL OF THEM. WE WON’T BLAME YOU.

SLALOM CREEK CONDOS



Slalom Creek remains a go-to option for many travelers for its combination of privacy, luxury, and out-the-door condo ease right at the base of RED. Cook a gourmet meal for your family & friends in the modern kitchen and then sneak out to the hot tub on the deck before you get stuck on dish duty, too.

Amenities: Private hot tub, WiFi, fitness room, indoor parking, in-house laundry, gas fireplace, ski storage, game room, & meeting rooms

THE JOSIE HOTEL



Located slopeside at RED, The Josie offers ski-in/ski-out boutique rooms and suites, crackling firepits, a spa, ski valet and concierge services. Pull up a seat at The Velvet Restaurant & Lounge where plates and glasses are filled with vibrant craft cooking and cocktails.

Amenities: Spa, premier fitness facility, WiFi, restaurant and lounge, meeting and event space, ski valet and concierge, valet parking, ski-in/ski-out

NOWHERE SPECIAL HOSTEL



Just a 2-minute walk to the chairlift, Nowhere Special Modern Hostel is perfect for social solo travelers, thrifty powder hounds, small families, and anyone who values community and connection.

Amenities: WiFi, indoor ski and bike storage, private rooms, deck with firepit and BBQs, tech-friendly lounge and modern kitchen, conference and meeting rooms, handicap rooms

THE CONSTELLA CABINS



A collection of six cabins and a central clubhouse, the Constella: A Cabin Collective, is perfectly situated in the aptly named Paradise Basin on the backside of Granite Mountain. Available for either one or two-night stays, these cabins offer unreal, mid-mountain, ski-in/ski-out access, literally on the runs of RED. Walk out your door, strap on your board or skis, and get first tracks to start your day lapping the Paradise Chair. Talk about unforgettable.

Amenities: ski-in/ski-out, access to central clubhouse for the afternoon/evening, full F&B bar, dinner and welcome drink included, optional breakfast, direct access to Paradise Chairlift

www.redreservations.com | lodging@redresort.com | 1-877-969-7669 or 1-250-362-5553



EVEN MORE

EXPLORE MORE PROPERTIES ON-MOUNTAIN AND IN TOWN

RED BASE AREA

RED MOUNTAIN VILLAGE



THE RED SHUTTER INN



MOUNTAIN TOWN PROPERTIES



ROSSLAND AREA

ROSSLAND RED MT. INN & SUITES



LONE STAR MOTEL



THE FLYING STEAMSHOVEL



RED BARN LODGE



CANADIAN SKI QUEST GUEST HOUSE



ALADAR'S GUEST CABIN



ANGELA'S B&B & GUEST HOUSE



MOUNTAIN SHADOW HOSTEL



KC LOFT



ROSSLAND INN



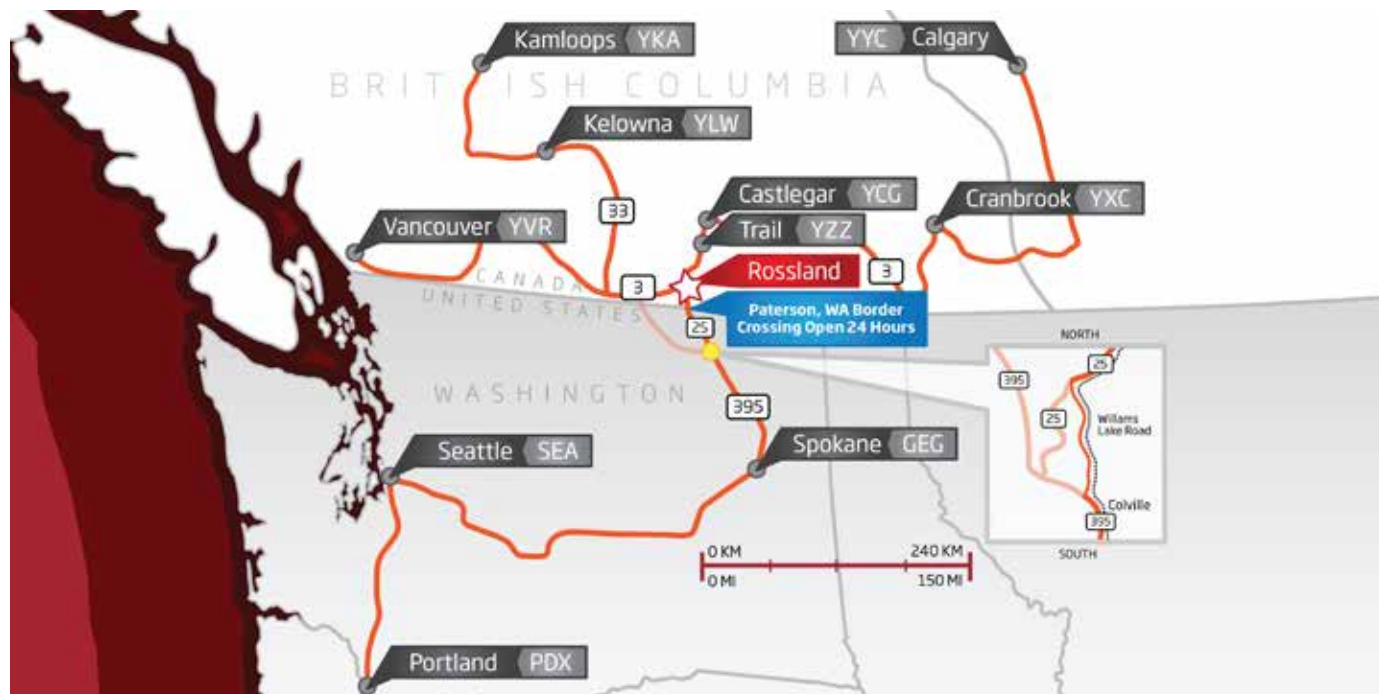
LAKEVOLD LODGE





HOW DO I GET TO RED?

DRIVING



FLYING





GET AROUND, GET DOWN

A REAL TOWN, REAL CLOSE. 5 MINUTES FROM RED.

LEGEND

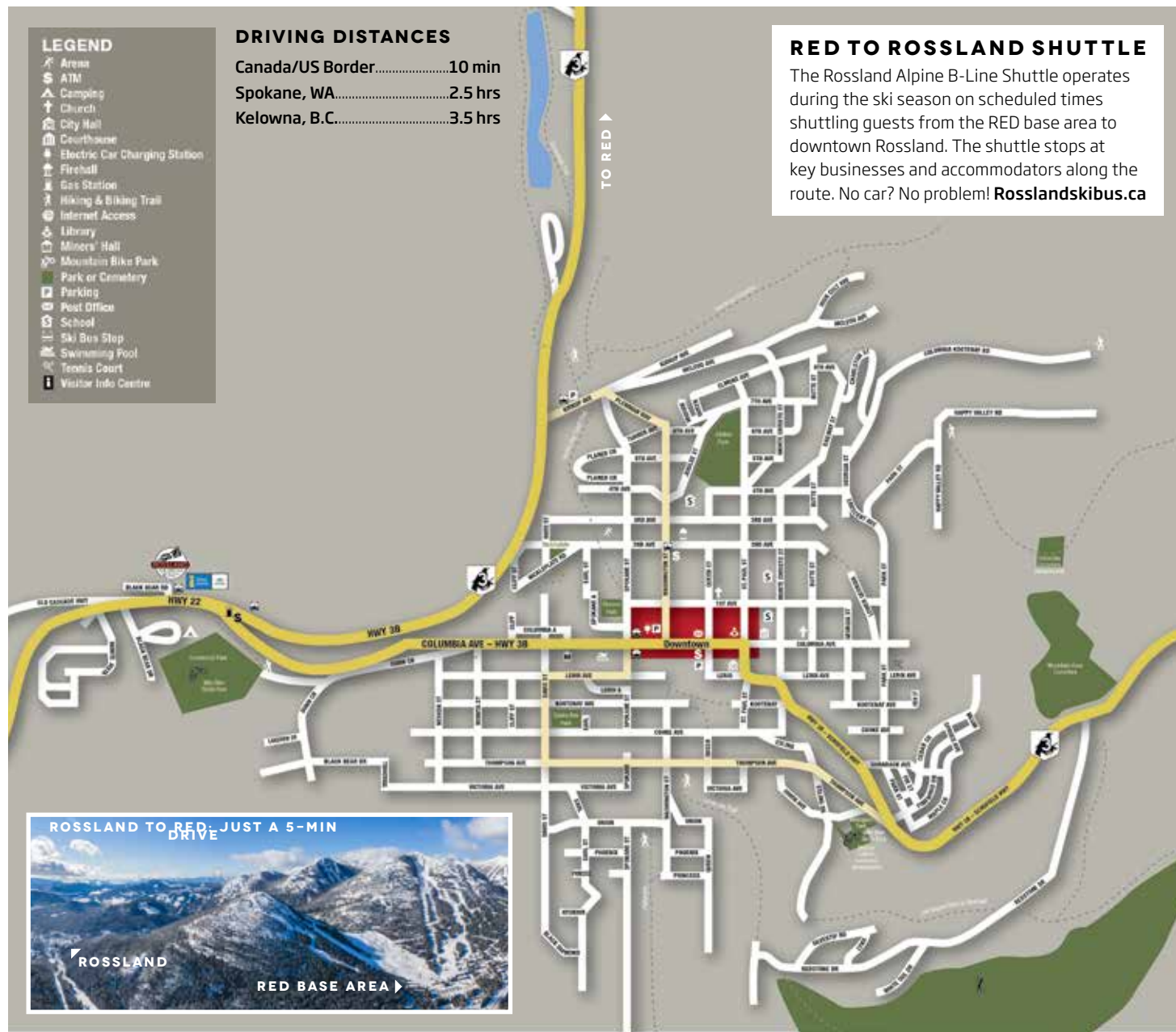
- Arena
- ATM
- Camping
- Church
- City Hall
- Courthouse
- Electric Car Charging Station
- Firehall
- Gas Station
- Hiking & Biking Trail
- Internet Access
- Library
- Miners' Hall
- Mountain Bike Park
- Park or Cemetery
- Parking
- Post Office
- School
- Ski Bus Stop
- Swimming Pool
- Tennis Court
- Visitor Info Centre

DRIVING DISTANCES

Canada/US Border	10 min
Spokane, WA	2.5 hrs
Kelowna, B.C.	3.5 hrs

RED TO ROSSLAND SHUTTLE

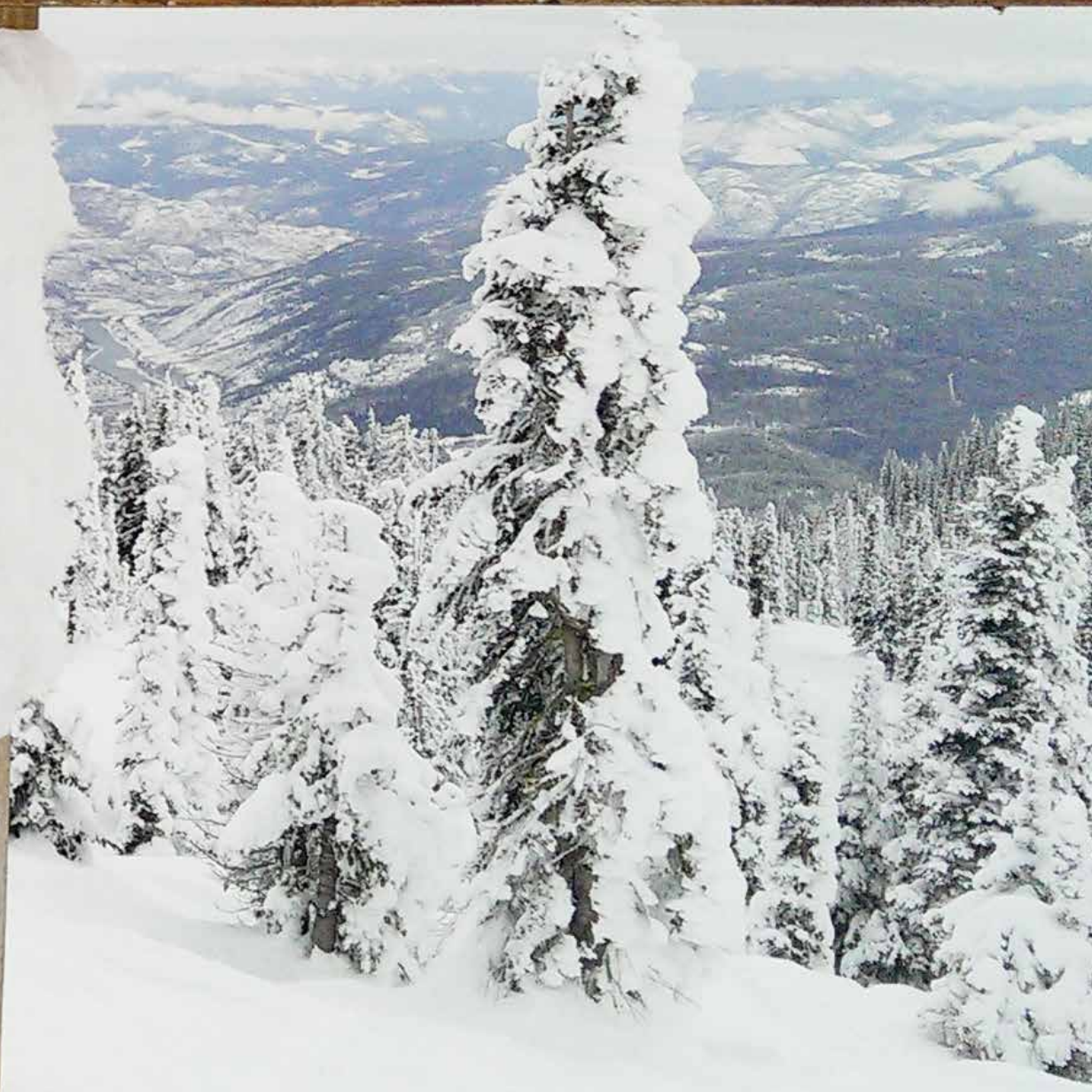
The Rossland Alpine B-Line Shuttle operates during the ski season on scheduled times shuttling guests from the RED base area to downtown Rossland. The shuttle stops at key businesses and accommodators along the route. No car? No problem! Rosslandskibus.ca



ROSSLAND TO RED: JUST A 5-MIN DRIVE







**"ADVENTURES OPEN
NEW DOORS IN THE
MOUNTAINS. THE BEST
PART IS NOT KNOWING
WHAT'S ON THE
OTHER SIDE."**

-KENNETH MCALPINE

R E D



MOUNTAIN RESORT

ROSSLAND, B.C. | www.redresort.com



@REDRESORT

FRONT COVER: RYAN FLETT
BACK COVER: ASHLEY VOYKIN