



MOUNTAIN RESORT
ROSSLAND, B.C. | www.redresort.com

YOUR INSIDE GUIDE TO THE GOODS

THE WORLD OF RED
AT YOUR FINGERTIPS.



RED MOUNTAIN RESORT

RECREATING IS SERIOUS BUSINESS AROUND HERE

Located in Rossland, BC and 1st stop on Canada's famous Powder Highway, fiercely independent RED delivers 3,850 acres of pristine skiing, putting us in the Top 10 for Total Skiable Acres in North America. Just a few years following the previous 1,000 acre Grey Mountain expansion, 2019/20 brought RED fanatics another 300 acres, a new chairlift, and 7 new runs on Topping Creek. In addition, we continue our unique offering of ten-buck-a-run in-bounds cat skiing on the flanks of stunning Mt. Kirkup. Around here, we pride ourselves on fresh turns you don't have to fight for—that's why we claim "#1 Most Acres Per Skier".

With 300"/7.6m of annual snowfall, wide-open groomers, epic vertical (2,919ft/890m!), 360-degree descents, a rich tradition, a new boutique hotel, a modern hostel, and – *phew!* – the BEST tree runs in BC, it's no wonder *The NY Times* voted us their "#8 Best Place in the World to Visit." We also nabbed "Most Underrated Resort" by *Skiing*. So, don't believe us—believe *them!* And don't forget après action in Rafters, "North America's Best Ski Area Bar" according to *Powder Magazine* (and us).

With Rossland's rugged charm and our legendarily friendly locals, RED Mountain Resort provides a Canadian mountain experience that will create memories guaranteed to last a lot longer than your last Facebook post. It's the full vacation package: Everything you need. Nothing you don't.

► WWW.REDRESORT.COM

THE ONLY FLUFF WE OFFER IS OUR SNOW.



“THERE ARE NO STRANGERS HERE;
ONLY FRIENDS YOU HAVEN’T YET MET.”

- William Butler Yeats

VOTED #1
SKI TOWN
IN CANADA
USA TODAY
10BEST 2020

ROSSLAND, B.C.



PUNCHING ABOVE
OUR WEIGHT
SINCE 1896

Gold got ‘em here. And the Kootenays kept ‘em here...

When gold-crazy miners struck pay dirt here in the late 1800s, they couldn’t have possibly known what would be “left in the pan” by today. But their grit, courage, and resourcefulness set the tone for the town to come. And, thanks to them, Rossland remains real in an era of artifice.

It might not be as rowdy as the Rossland of 1896 with its 42 saloons and 21 brothels, but this place has a pulse. You can feel it on the street, in the shops, or in the grocery store. It hits you as soon as you step out of your car. The hard-as-hobnails miners with pick axes over their shoulders have simply been replaced by hardcore fun-seekers with fat skis or mountain bikes over their shoulders. It’s true many of them still have massive beards but, rest assured, the vibe is more “bro” than “brothel” heading into the winter.

Modern-day Rossland is that rare beast: A place of small town charm and big, big ideas. A real municipality at the base of a world-class ski resort. A four season paradise where there are more recreational opportunities than there are hours in the day. An historic downtown core with all mod cons, from gourmet espresso to book stores. And all of it is held together by the famously friendly locals and their commitment to making sure that Canadian Hospitality still means something, whether you’re traveling as a family or on a solo powder pilgrimage.

THE CONSTELLA

A BACKCOUNTRY EXPERIENCE FOR ALL.

Imagine making your next mountain getaway truly next level. Debuted in December of 2020, The Constella: A Cabin Collective, lets you lose yourself in calm and quiet and fully recharge for a big day on the mountain – right out your doorstep. Booking one of these unique and cozy cabins is sure to be a bucket list item to remember.

A collection of six cabins and central clubhouse, the Constella is perfectly situated in the aptly named Paradise Basin on the backside of Granite Mountain. Our goal in building these cabins and clubhouse was to offer unreal, on-mountain, ski-in/ski-out access to RED—and they turned out even better than we'd hoped: High up the mountain, the clear Kootenay night sky will be up, above, and all around you. The clean, crisp air makes it seem like those sparkling stars are actually within reach and that you've finally found your own private paradise. (Shhh! You kind of have....) Evergreen woods provide shelter from winter winds while our eco-friendly cabins provide a cozy shelter for you and your group to crack a beer and catch up properly. These quaint cabins are available for either one or two-night stays.

In the morning, strap on your board or skis and head down to the Paradise Chairlift to start the day the second the lifts start spinning. Talk about an unforgettable experience.

► [REDRESORT.COM/CONSTELLA](https://redresort.com/constella)



ASHLEY VOYKIN



ASHLEY VOYKIN



ASHLEY VOYKIN

NOWHERE SPECIAL

MODERN TRAVELERS REJOICE!

Nowhere Special is the quintessential modern hostel, suitable for travelers of all ages who value community, connection, and careful curation above all. The operating mantra since the napkin-stage has been the same one that's kept RED cool for over 100 years, i.e. "Everything you need & nothing you don't".

Located a mere two-minute walk from the chairlift, Nowhere Special dishes out a number of floor plans catering to different needs for privacy and price, including two wheelchair-accessible units. A typical room here at Nowhere Special sleeps four and shares an ensuite bathroom for each eight.

We know there's a lot of you exploring Canada's West on your own - or in a small group - and our goal is to provide that perfect social mix to help create memories that last for a lifetime - on and off the mountain! The town of Rossland (just a 5-minute drive from the hostel) is incredibly friendly and this, more than anything, is what keeps people coming back. You are a stranger here but once...

Real-world needs like indoor bike and ski storage and an outdoor fire pit with two gas grills make Nowhere Special nothing like our name. A clean community kitchen with two ranges, a commercial fridge, and all the silverware and dishes you might need to build a serious après-ski spread for your "new best friends" round out the offering.

► NOWHERESPECIALHOSTEL.COM



ON THE LIFTS IN RECORD TIME

Prepare to have your ski town expectations exceeded. With a 4.5-Star average user rating on TripAdvisor, Slalom Creek is your go-to for ski-in/ski-out on RED Mountain.

Amenities at Slalom Creek include ultra-modern kitchens, covered deck hot tubs with views of the mountain, large master bedrooms, and steam showers. It's no wonder so many families stay at Slalom Creek once and then book year after year.

A week or weekend at Slalom Creek makes relaxation pretty much mandatory. Freshen up in your steam shower after skiing and walk to independent restaurants or to world-famous Rafter's for our "No Shower Happy Hour". Have a snowball fight. Walk around in the snow and enjoy fresh air at its finest and mountain vistas you might try to smuggle home in your luggage.

Other perks include: tasteful furnishings, WiFi, flatscreen TVs, ski rooms, games room, elevator, underground parking, and more. Basically, if you need it, it's here. If you don't, it ain't.

Say goodbye to "Lodge-Podge" and stay in style this winter at Slalom Creek: Champagne accom on a beer budget.

► [REDRESERVATIONS.COM](https://redreservations.com)



MEET JOSIE.

SKI-IN/SKI-OUT BOUTIQUE HOTEL

Located slopeside at RED, just steps from the chairlift, The Josie puts pristine powder and the best gladed tree runs in North America right on your doorstep. Early risers, late sleepers, blanket hogs, and even furry friends can choose from 106 gorgeous guest rooms, studios, one and two-bedroom suites with expansive views of RED Mountain Resort and the Rossland Range. The only way to wake up closer to the slopes would be to sleep on a chairlift—*brrrr!*

Pull up a much warmer chair at The Velvet Restaurant & Lounge where you'll sip handcrafted cocktails and brews made by bartenders you'll refer to by nickname. Feast on French-influenced seasonal fare cooked up by Chef MAC, all surrounded by soaring alpine vistas. And do it all over again the very next day—after a lazy morning in your cushy guest suite, of course.

Around this designer's dream of a hotel you'll find crackling fire pits, a luxurious spa, a modern fitness centre, flexible event space, and plenty of spots to hide and read where your family can't find you. Need someone to set up cat skiing for your crew? Insider tips on favorite runs? The Josie's dedicated concierge team will hook you up with everything you need, including a ski valet laying your skis on the snow each morning for the ultimate in ski-in/ski-out luxury.

While winter serves up our famous skiing and snowboarding, the summer months in Rossland offer world-class mountain biking, hiking, golfing, fishing and so much more. Base yourself at The Josie and adventure is always in-season.

► [THEJOSIE.COM](https://www.thejosie.com)



FIND YOURSELF
IN ANY SEASON

The West Kootenay region of B.C. is incredibly rich with diverse activities, enjoyable by all walks of life - and this is true whether you visit in July, January, or October. Until now, guests in the region would have to rely on conventional sources to seek out and find these treasures. Cue the GET LOST Adventure Centre, Rossland's gateway to adventure. GET LOST will make getting out there easy, whether you are looking to snowshoe in the winter, fly fish in the spring, alpine hike in the summer, or kayak in the fall.

We might be famous for our epic vertical, powder days, powder weeks, world class ski racing, and glorious glades but, the second that beautiful snow melts, the diversity of diversions around here actually increases. (Trust us—we live here 24/7/365.) Open year-round, the GET LOST Adventure Centre is the region's first central booking agent for all outdoor and indoor activities alike, consolidating of all of the region's wonderful recreation opportunities supported by world-class guides, instructors, or simple guidance.

With all available activities and vetted guides grouped into one, easy-to-use central booking engine, you can book your fat bike session from the airport in Seattle or your nordic lesson from your kid's soccer practice in Vancouver, and rest assured that you have one less thing to think about while enjoying your time here. We'll help visitors from around the world safely tap into the wild beauty of British Columbia while providing endless challenges for thrill seekers.

Looking for the gateway to adventure? It's right here.

► [REDRESORT.COM/GETLOST](https://redresort.com/getlost)



ASHLEY VOYKIN



RYAN FLETT/TOURISM ROSSLAND



ASHLEY VOYKIN

TOPPING CREEK

300-ACRE TOPPING CREEK EXPANSION

RED just continues to get radder. The B.C. resort—long-time favourite of powder-hounds and fall-line aficionados—continues to climb through the big leagues with yet another addition of new terrain for its guests to recreate on. The Topping Creek expansion and additional chairlift in 2019/20 added to RED's already behemoth size, bumping it now into the Top 10 for Total Skiable Acres in North America with total acreage clocking in at 3,850!

Indeed, the Topping Creek Chair makes “getting up to the good stuff” easier for everyone. Grey Mountain is now a straight-shot from the top of Silverlode with Topping Creek's addition, and helps alleviate the occasional powder day bottleneck on Motherlode Chair. Skiers are able to return to Topping Creek from anywhere on Grey Mountain or from the legendary \$10-a-run cat skiing on Mount Kirkup. (The big question is whether anyone's legs can handle all that RED will throw at them!)

The Topping Creek Chair addition covers a total of 300 additional acres and boasts seven new Intermediate runs with stellar tree-skiing, “squirrel trails” and “slots” on all facets. From the top of the new Topping Creek Chair, skiers and snowboarders are thrilled by 1,000 vertical feet of some truly beautiful southeast facing (and potentially leg-burning!) terrain. This new lift-accessed acreage is just another addition to RED Mountain that makes it one of the largest remaining independent ski resorts in North America attracting new destination visitors who only want to ski the biggest and best with the Most Acres Per Skier in North America.



TRAIL MAP

Vertical Drop	890m / 2919ft
Skiable Acres	3,850 acres
# of Runs	119
# of Stashes	Countless
Number of Lifts	8
Beginner ●	17%
Intermediate ■	34%
Advanced ◆	23%
Expert ◆◆	26%



OVERVIEW



ALL ACCESS! If you're new to RED, all of these potential runs and lines can be a little overwhelming. Don't fret! No matter which adventure you choose -- hit up the Paradise face (inset A); fly down into Granite Bowl (inset B); take to the front near Motherlode; or head over to the Grey Mountain chair (whether it be runs on Grey, down to the newest addition of the Topping Creek Chair, or a snowcat pickup to take you on your way to Mt Kirkup!) -- you'll always find a cat track at the end guiding you back toward a lift to do it all over again.



PRE-APRÈS & POST-APRÈS ARE NOT THE SAME AS “DINNER”

Whether you were baptized with a burger in-hand or lean more toward grilled baby leeks glazed with white truffle oil, Rossland's restaurants are sure to satisfy.

Gourmet pizza at Misty Mountain? *Check.* Sit-down *eye-talian* at Gabriella's? *Sì.* French-inspired and chef created at The Velvet? *Bien sûr!* Life changing nachos and caesars at Rafter's? *Burp.* Tempting tempura at Aka Dake Sushi? *Hai!* Decadent desserts at Idgie's? *Hey, that's mine!* Food, fun and fist bumps at The Flying Steamshovel, a Gold Rush era pub? *Oh, hells yes!* Crafty craft beers at Rossland Beer Company? *Cheers – and please put your toque back on!* Cook your own back at the condo with ingredients from Ferraro Foods, our gourmet grocery? *YOU made this?!* Even our Thai food at Mook Thai is top notch. We can keep going, just thai and stop us.

We think it's safe to say you get it... But here's the deal: Rossland's amazing four-season lifestyle offerings have all but guaranteed that entrepreneurial gourmets, chefs, brewers and coffee heads move here and set up shop. And when that happens, that's clearly a win for everyone. Let's just say that it was all part of our master plan...



BOUTIQUE SHOPS

FILL YOUR BOOTS OR JUST GET THEM FITTED

For some folks (who shall go nameless), a ski holiday is simply a great excuse to go shopping. At least now we understand why so many large pockets on that giant ski bag were left strategically empty...

Rossland's independent spirit is perfectly reflected in the shop windows lining our historic streets: no Big Box stores here. You'll score items that you've never seen before, from infant onesies to top-of-the-line Gore-Tex onesies for grownups.

Shop curated apparel at *Out of the Cellar*, any and all things cooking at *Bear Country Kitchen*, clothing and accessories at *Curiosity Clothing and Gifts*, and high-quality giftware from local artists at *Kootenay Gateway*. Or, have a bed 'n' bath bonanza at *Feather Your Nest* and then get your second wind at one of Rossland's awesome coffee shops like the *Alpine Grind* or *Seven Summits Coffee Company*. (We've done studies and a large latte will enable you to shop for exactly 2.5 more hours.)

Your dad's 30 year-old gloves with duct tape not doing the trick your first day on the mountain? Go buck wild with the best pick of endless soft goods at the *Piste Off Supply Co.* conveniently located at the base of RED. And if it's your sports gear that needs upgrading or tweaking, know that Rossland's wizards, such as *Powderhound*, *Butch Boutry*, *Revolution*, and *RossVegas Boardshop*, can sort you out in ways you never thought possible. They live, eat and breathe mountain sports so they know what works best, regardless of budget. Get your boots fitted or yourself kitted right out, from goggles to gewgaws.



THERE'S MORE!

CAT SKIING: JUST \$10/RUN ON RED'S IN-BOUNDS MT. KIRKUP

Looking for an introduction to cat skiing, or maybe just a few extra-epic powder laps? Grey Mountain is the pick-up location for RED's \$10/run cat skiing operation that shuttles powder-frothing skiers and snowboarders up to the top of adjacent Mt Kirkup to shred 1,600 ft. of vertical and nearly 200 acres that isn't chairlift accessible. The best part? The end of your run takes you right back to the Grey chairlift. *Powder to the people.*

► [REDRESORT.COM/MT-KIRKUP-CAT-SKI](https://redresort.com/mt-kirkup-cat-ski)

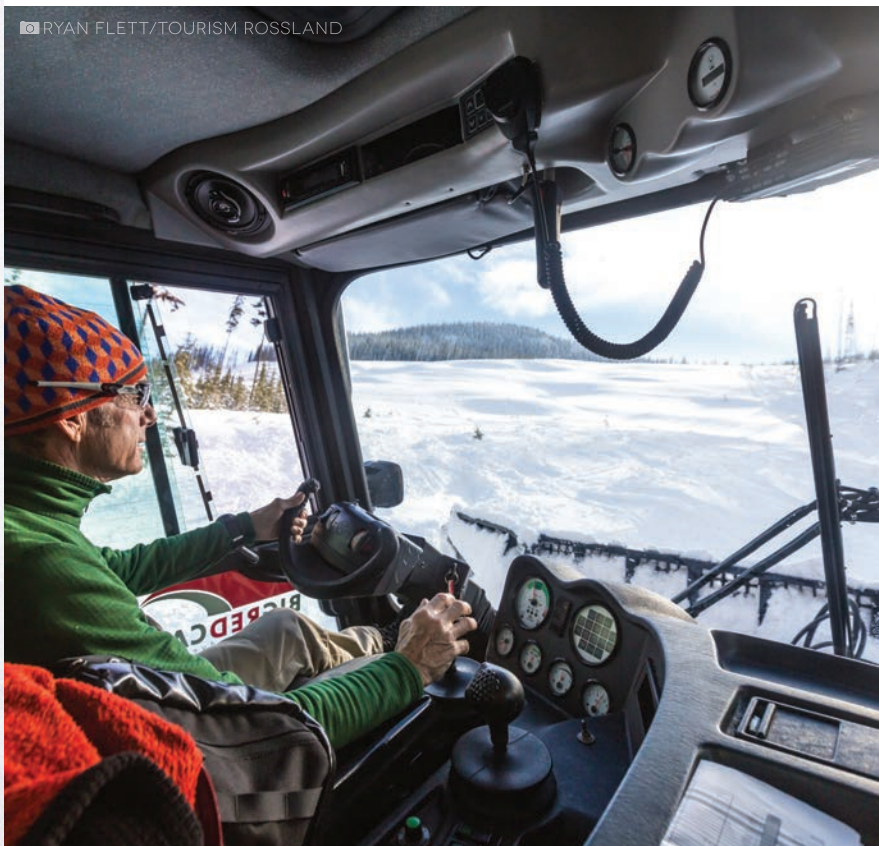
BIG RED CATS: BIGGER THAN SOME SMALL COUNTRIES.

Rossland's Big Red Cats (BRC) is the world's largest cat skiing operation headquartered right next door to RED. Not only are there 8 peaks at BRC's disposal, there are almost 20,000 acres of the best tree skiing, glades and pillow lines in the world. With BRC you can explore the vast backcountry with a cat-full of stoked riders sharing your ability: Intermediate, Advanced, Expert or, occasionally, Über-expert. Yeah, that's right: *Über-expert.*

► [BIGREDCATSKIING.COM](https://bigredcatskiing.com)



© RYAN FLETT/TOURISM ROSSLAND



© REID



© REID



© REID

BLACK JACK: THE ODDS ARE 1 IN 6...

Black Jack Cross Country Ski Club boasts 40 kms of professionally-groomed trails for classic and skate skiing, a Biathlon range, a 2 km doggy loop, 3 cozy cabins, and 2.5 kms of lit trails. It's a blue chip experience on a white chip budget, all only 4 minutes north of town.

Recent improvements include significant upgrades to the trail system that will result in both earlier skiing and better skiing for the season. The veritable XC club of 700+ members also reconnected and reopened Ophir Trail, a breathtaking climb with views of the Rossland Range that'll take (what's left of) your breath away.

Come and find out what the world's best Nordic athletes already know: Black Jack is one of Canada's premier facilities with programs for all ages and abilities. Hey, there's a reason 1 in 6 Rosslanders is a member...

► [SKIBLACKJACK.CA](https://skiblackjack.ca)

ACCOMMODATIONS

WORK HARD. PLAY HARD. SLEEP HARD.

For years, about the only thing visitors had to gripe about here was a shortage of slopeside accommodation options. It was pretty much condo or...condo. **So we listened.** We dug holes. We poured foundations. And we built what has now become the premier resort lodging fleet on The Powder Highway. No matter how deep your crew—or how skinny your wallet—Red Mountain Resort Lodging has the perfect place to hang your toque. Maybe you'll have to just try all of them. We won't blame you.



SLALOM CREEK CONDOS

Slalom Creek remains a go-to option for many travelers for its combination of privacy, luxury, and out-the-door condo ease right at the base of RED. Cook a gourmet meal for your family & friends in the modern kitchen and then sneak out to the hot tub on the deck before you get stuck on dish duty, too.

Amenities: Private hot tub, WiFi, fitness room, indoor parking, in-house laundry, gas fireplace, ski storage, game room, & meeting rooms



THE JOSIE HOTEL

Located slopeside at RED, The Josie offers ski-in/ski-out boutique rooms and suites, crackling firepits, a spa, ski valet and concierge services. Pull up a seat at The Velvet Restaurant & Lounge where plates and glasses are filled with vibrant craft cooking and cocktails.

Amenities: Spa, premier fitness facility, WiFi, restaurant and lounge, meeting and event space, ski valet and concierge, valet parking, ski-in/ski-out



NOWHERE SPECIAL HOSTEL

Just a 2-minute walk to the chairlift, Nowhere Special Modern Hostel is perfect for social solo travelers, thrifty powder hounds, small families, and anyone who values community and connection.

Amenities: WiFi, indoor ski and bike storage, private rooms, deck with firepit and BBQs, tech-friendly lounge and modern kitchen, conference and meeting rooms, handicap rooms



**THE CONSTELLA:
A CABIN COLLECTIVE**

A collection of six cabins and central clubhouse, the Constella: A Cabin Collective, is perfectly situated in the aptly named Paradise Basin on the backside of Granite Mountain. Available for either one or two-night stays, these cabins offer unreal, on-mountain, ski-in/ski-out access to RED. Walk out your door, strap on your board or skis and head right to the Paradise Chairlift to start your morning. Talk about an unforgettable experience.

Amenities: ski-in/ski-out, access to the central clubhouse for the afternoon/evening, bar, optional dinner & breakfast, direct access to Paradise Chairlift

Not sure which option is right for your group? Hit us up and we'll get you sorted - on-time and on-budget.
www.redreservations.com | Lodging@redresort.com | 1-877-969-7669 or 1-250-362-5553



MORE ACCOMMODATIONS

RED BASE AREA

Red Mountain Village



www.redmountainvillage.com

The Red Shutter Inn



www.redshutter.ca

Mountain Town Properties



www.mountaintownproperties.ca

ROSSLAND AREA

Prestige Mountain Resort



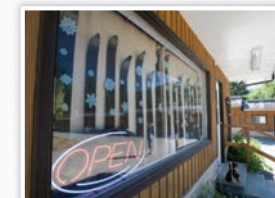
www.prestigehotelsandresorts.com

Rossland Red Mt. Inn & Suites



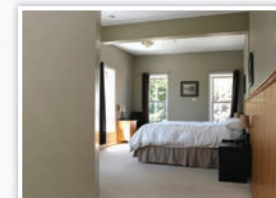
www.rosslandredmountaininn.com

Rossland Motel



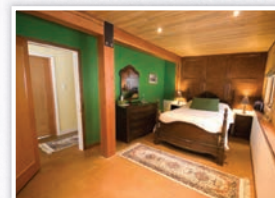
www.stayandplayrossland.com

The Flying Steamshovel



www.theflyingsteamshovel.com

Red Barn Lodge B&B & Guesthouse



www.redbarnlodge.com

Sweet Dreams Heritage Inn



www.sweetdreamsheritageinn.com

Canadian Ski Quest - Guest House



Email: mark@skiquest.ca

Aladar's Guest Cabin



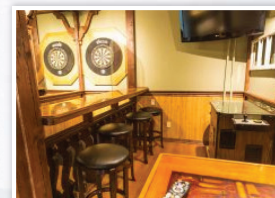
Email: aladar@telus.net

Angela's B&B and Guest House



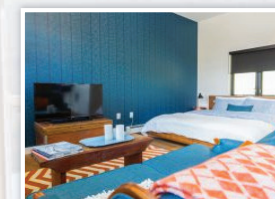
www.visitangela.com

Mountain Shadow Hostel



www.mshostel.com

KC Loft



www.kcloftrossland.com

Rossland Inn



www.rosslandinn.ca

Lakevold Lodge

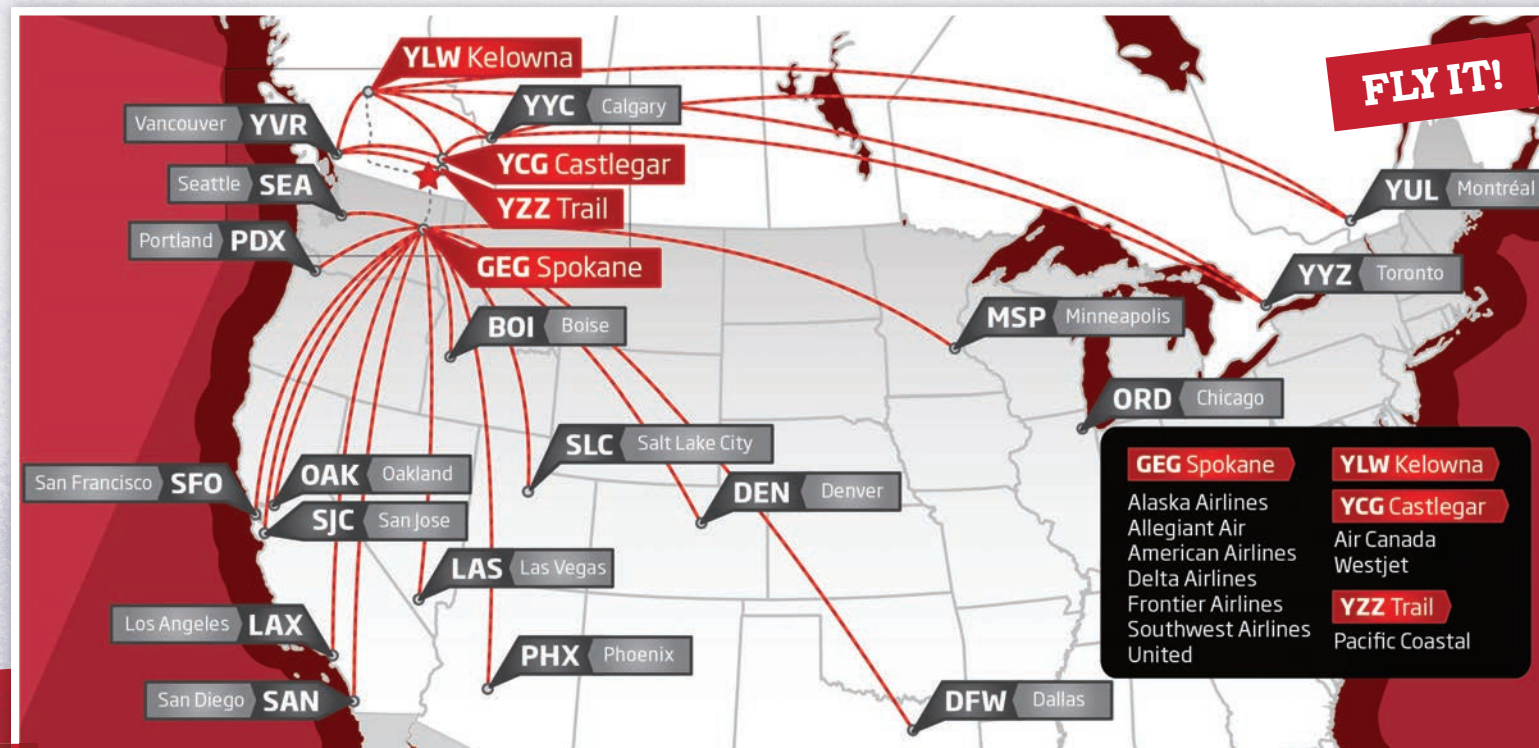
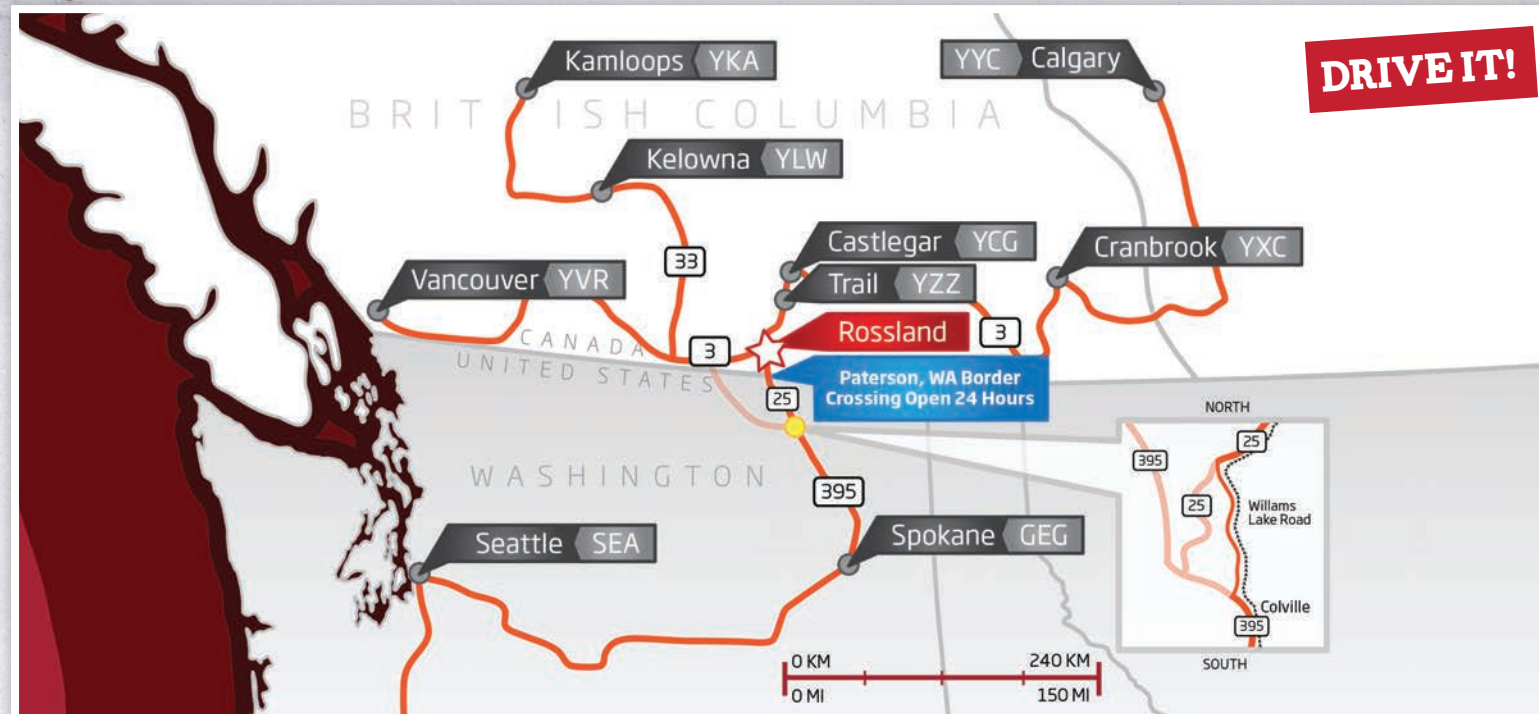


www.lakevoldlodge.com

VISIT WWW.TOURISMROSSLAND.COM
FOR MORE DETAILS ON ALL OF THESE IN-TOWN ACCOMMODATIONS & MORE!

SO...HOW DO I GET THERE?

FLY, DRIVE, RUN — JUST GET HERE!



ROSSLAND: GET AROUND, GET DOWN.

A REAL TOWN, REAL CLOSE. 5 MINUTES FROM THE BASE LODGE



Driving Distances:

Canada/US border
Spokane, WA
Kelowna, B.C.

10 minutes
2.5 hours
3.5 hours

PLUS!:

Daily shuttle from Spokane
Airport available!

For bookings and inquiries please call 1-877-969-7669



MOUNTAIN RESORT

ROSSLAND, B.C. | www.redresort.com

   /redresort  /redmountainresort

FRONT COVER PHOTO: ASHLEY VOYKIN